

VERUS ENGINEERING

Drag Wing – Mk5 Toyota Supra Install Manual



Author: C. Warner
Release Date: 2023/12/20
Approvals: E. Hazen
Document Revisions

Rev	Date	Author	Description
01	2023/12/20	C. Warner	Initial release of install manual

Confidential: Property of Verus Engineering. Not for Distribution outside intended recipient list.

MK5 Toyota Supra Drag Wing – Install Manual

CONTENTS

1. Introduction	<3>
1.1. Overview	<3>
1.2. Difficulty	<3>
1.3. Time Required	<3>
1.4. Tools Needed	<3>
1.5. Drag Wing Components	<3>
2. Drag Wing Install.....	<4-8>

MK5 Toyota Supra Drag Wing – Install Manual

1. Introduction

1.1. Overview: Detailed instructions on installing the Verus Engineering Drag Wing on the MK5 Toyota Supra.

1.2. Difficulty: Easy

1.3. Time Required: 1 hour

1.4. Tools Needed:

- 1.4.1. Socket Wrench
- 1.4.2. 4mm Allen Key or Socket
- 1.4.3. 5mm Allen Key or Socket
- 1.4.4. Drill
- 1.4.5. 1/4" Drill Bit (Starter Bit)
- 1.4.6. 3/8" Drill Bit
- 1.4.7. 9/16" Wrench
- 1.4.8. Sharpie or Paint Pen
- 1.4.9. 50/50 Mixture of Isopropyl Alcohol and Water
- 1.4.10. Microfiber

1.5. Rear Wing Components

- 1.5.1. (1) Carbon Drag Wing
- 1.5.2. (1) Right-Hand Support Bracket
- 1.5.3. (1) Left-Hand Support Bracket
- 1.5.4. (1) **Hardware Bag**
 - 1.5.4.1. (1) M6 Rivet Nut Install Tool
 - 1.5.4.2. (4) Rivet Nut for Plastic Application
 - 1.5.4.3. (8) M6 x 1.0 BHCS (Button Head Cap Screw) x 16mm Long, Stainless
 - 1.5.4.4. (8) M6 x 12mm OD Washer, Stainless
 - 1.5.4.5. (1) 3M VHB Roll

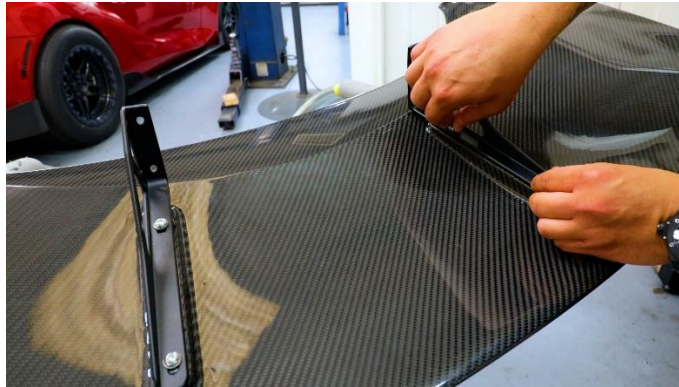


Confidential: Property of Verus Engineering. Not for Distribution outside intended recipient list.

MK5 Toyota Supra Drag Wing – Install Manual

2. Supra Drag Wing Install

- 2.1. Verus Engineering is not responsible for damage to you or your vehicle by following this manual and/or installing Verus Engineering products.
- 2.2. First, we want to assemble the wing assembly by loosely installing the brackets. Do so by using four of the M6x16mm long BHCS and four of the 12mm OD washers. Keep these bolts hand tight for the time being. **Note: The chamfered sides of the brackets are intended to be facing outward as shown below.**



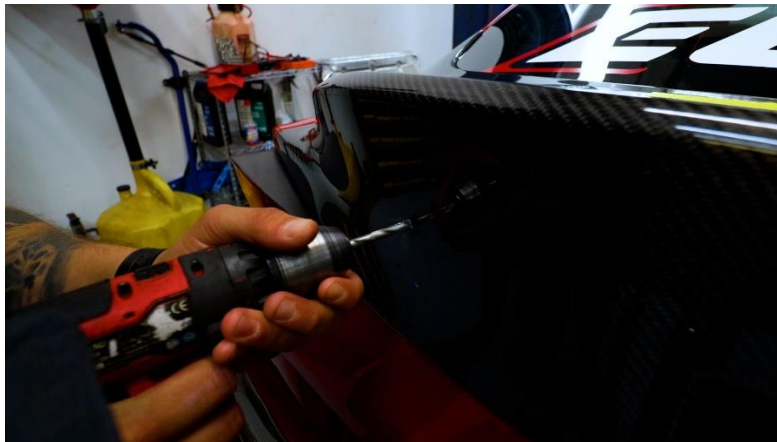
- 2.3. After the brackets are loosely installed, we now need to test fit the wing on the rear hatch to mark the holes for installing the rivet nuts. A second set of hands is helpful here to ensure the wing stays in place while you are marking the holes in the rear hatch.
- 2.4. Once the wing is placed where you want it on the rear hatch, carefully slide the brackets forward until they are touching the rear hatch and mark your holes with a Sharpie or a paint pen. Ensure the wing does not move while marking the holes.

Confidential: Property of Verus Engineering. Not for Distribution outside intended recipient list.

MK5 Toyota Supra Drag Wing – Install Manual



- 2.5. Carefully remove the spoiler once the holes are marked and set aside.
- 2.6. Drill these four marked locations using your 1/4" drill bit or starter bit.
- 2.7. Open up the holes using your 3/8" drill bit.



- 2.8. Once the holes are opened up to 3/8", we can now install the rivet nuts. To properly install the rivet nut, you will want to thread the rivet nut onto the tool as shown below, and place the rivet nut into the hole.



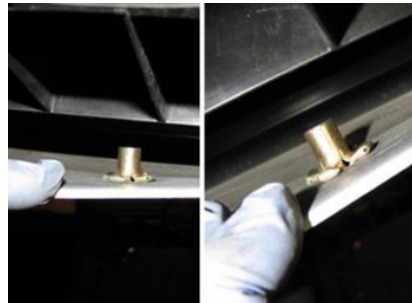
Confidential: Property of Verus Engineering. Not for Distribution outside intended recipient list.

MK5 Toyota Supra Drag Wing – Install Manual

- 2.9. Using the 9/16" wrench and the 5mm Allen wrench, hold the nut steady and tighten the Allen bolt. You will have some initial resistance, then the rivet nut will begin to pull tighter on the material.



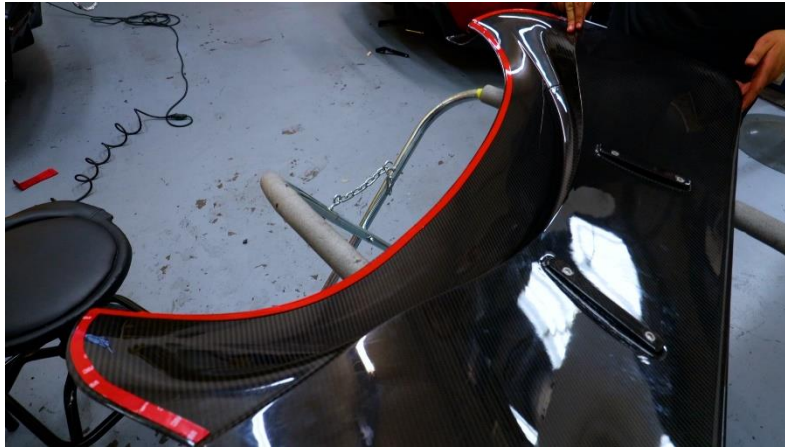
- 2.10. Below are pictures of a properly installed rivet nut.



Confidential: Property of Verus Engineering. Not for Distribution outside intended recipient list.

MK5 Toyota Supra Drag Wing – Install Manual

- 2.11.** With the rivet nuts fully installed, it is now time to prep the hatch surface as well as the wing surface for installing the 3M VHB. Do so by using your 50/50 mix of isopropyl alcohol and water and a microfiber to clean both surfaces.
- 2.12.** Now we can install the 3M VHB as shown below. Follow the leading edge of the wing, leaving the backside of the wing free of tape.



- 2.13.** Place the wing back on the rear hatch and create a small flap by peeling back one end of the red tape backing as shown below. **Note: Ensure your mounting bracket holes line up with the rivet nuts properly before final placement of the wing.**



- 2.14.** Slowly peel off the red backing while massaging the wing onto the rear hatch.
- 2.15.** After the wing is secured with the 3M VHB, we can now slide the brackets back into place and secure them using the remaining BHCS and washers. Tighten all eight bolts to 6 ft-lbs at this time.

Confidential: Property of Verus Engineering. Not for Distribution outside intended recipient list.

MK5 Toyota Supra Drag Wing – Install Manual



2.16. Congratulations on installing our Drag Wing on your MK5 Toyota Supra. Please send any questions, comments, concerns, or photos to Verus Engineering via e-mail; support@verus-engineering.com.



Confidential: Property of Verus Engineering. Not for Distribution outside intended recipient list.