

# VERUS ENGINEERING

## Pitch Stop Brace – Toyota GR Corolla Install Manual



Author: Eric Hazen  
Release Date: 2024/12/30  
Approvals: R. Armantrout

### Document Revisions

Rev	Date	Author	Description
01	2024/12/30	E. Hazen	Initial release of install manual

Confidential: Property of Verus Engineering. Not for Distribution outside intended recipient list.

---

Pitch Stop Brace, Toyota GR Corolla – Install Manual

# CONTENTS

1. Introduction .....	<3>
1.1. Overview .....	<3>
1.2. Difficulty .....	<3>
1.3. Time Required .....	<3>
1.4. Tools Needed .....	<3>
1.5. Pitch Stop Brace Components .....	<3-4>
2. Pitch Stop Brace Install .....	<4-7>

## Pitch Stop Brace, Toyota GR Corolla – Install Manual

**1. Introduction**

**1.1. Overview:** Detailed instructions on installing the Verus Engineering Pitch Stop Brace on the Toyota GR Corolla.

**1.2. Difficulty:** Easy

**1.3. Time Required:** .5 - 1 hour

**1.4. Tools Needed:**

- 1.4.1. Ratchet(s)
- 1.4.2. 24mm Socket
- 1.4.3. 22mm Socket
- 1.4.4. 14mm Socket
- 1.4.5. Torque Wrench
- 1.4.6. Flat-Head Screwdriver
- 1.4.7. Jack
- 1.4.8. Jack Stand(s)

**1.5. Pitch Stop Brace Components**

- 1.5.1. (1) Anodized Engine-Side Mount
- 1.5.2. (1) Anodized Chassis-Side Mount
- 1.5.3. (4) 70A Durometer Bushing, Black
- 1.5.4. (4) 80A Durometer Bushing, Gray
- 1.5.5. (4) 90A Durometer Bushing, Blue

**1.5.6. Hardware Bag**

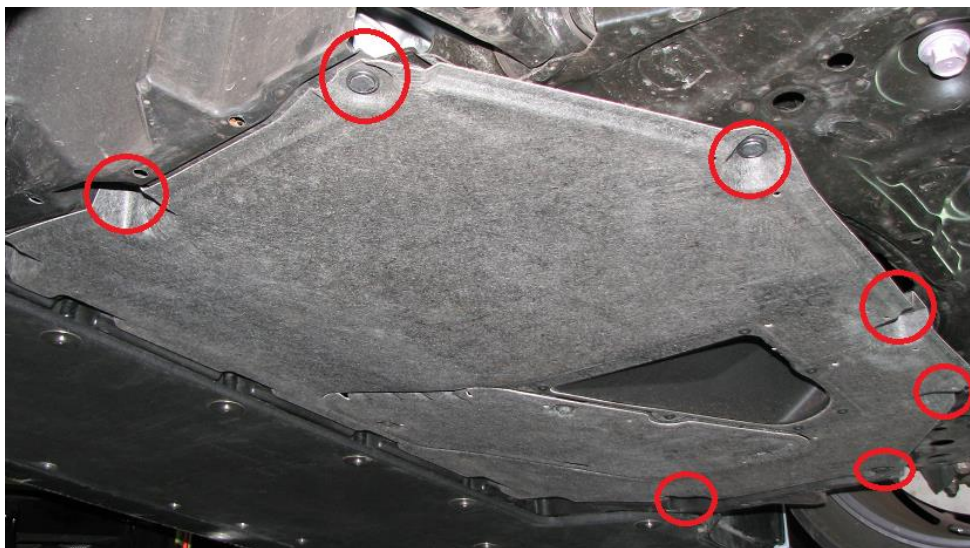
- 1.5.6.1. (1) M16 x 1.5 Flanged Nut, Alloy Steel
- 1.5.6.2. (1) Engine-Side Bushing, Stainless
- 1.5.6.3. (1) Chassis-Side Bushing, Stainless

Confidential: Property of Verus Engineering. Not for Distribution outside intended recipient list.

## Pitch Stop Brace, Toyota GR Corolla – Install Manual

**2. Pitch Stop Brace Install**

- 2.1. Verus Engineering is not responsible for damage to you or your vehicle by following this manual and/or installing Verus Engineering products.
- 2.2. We begin by gaining access to underneath the car. Jack the car up using the opposite OEM lift points, and support it safely.
- 2.3. Using a flat head screwdriver, remove the rearmost (7) plastic clips on the underbody panel (circled in red below). If you do not have a front splitter installed, you can remove this entire panel to make the installation easier by removing a few more points further forward.



Confidential: Property of Verus Engineering. Not for Distribution outside intended recipient list.

## Pitch Stop Brace, Toyota GR Corolla – Install Manual

- 2.4. With the panel hanging down, we can see the pitch stop brace. Note that our prototype unit is currently on the car, not the OEM piece.



- 2.5. To remove the pitch stop brace, remove the (2) 22mm bolts circled in yellow and the (4) 14mm bolts circled in blue.



- 2.6. An image below of the OE unit removed.



Confidential: Property of Verus Engineering. Not for Distribution outside intended recipient list.

## Pitch Stop Brace, Toyota GR Corolla – Install Manual

2.7. We can now assemble the Verus pitch stop braces.

2.8. Figure out which bushing durometer you would like and then install them in each side of the engine and chassis braces as shown below. Black is 70A, Gray is 80A, and Blue is 90A. We typically recommend 70A.



2.9. Install the correct bushings in each respective brace. The longer bushing goes in the chassis side brace, the shorter bushing goes in the engine side brace, as shown below.



2.10. Once the braces are assembled, they are ready to be installed.

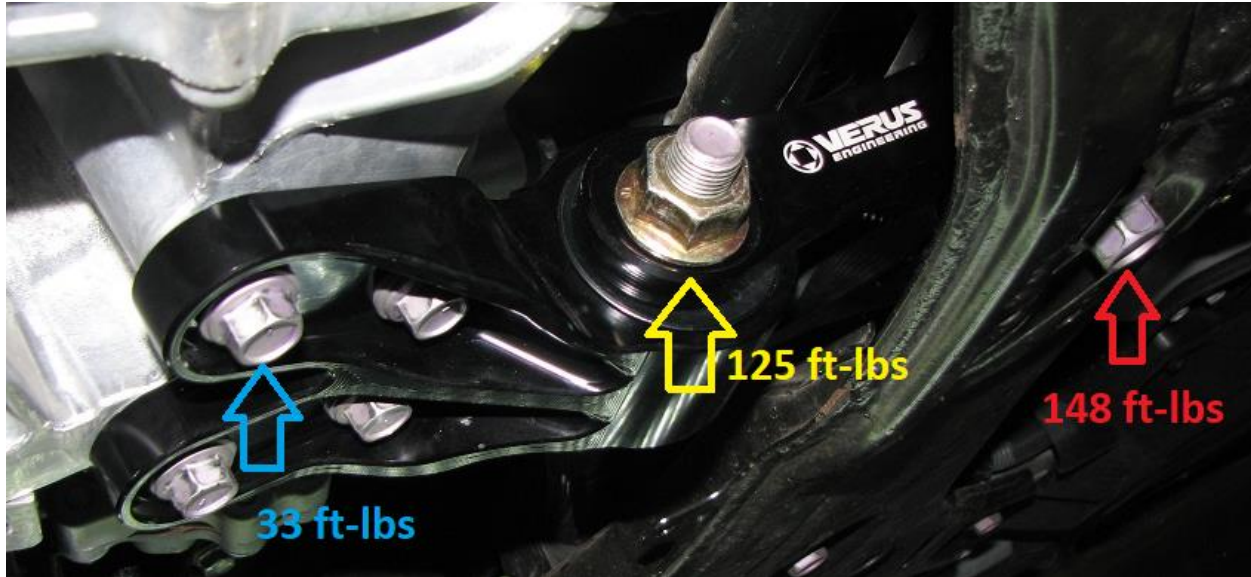
2.11. Install the chassis side brace first, and then the engine side brace, reusing the factory bolts in their respective places. Use the supplied nut with the factory bolt for the connection between chassis and engine braces, circled in red below.



Confidential: Property of Verus Engineering. Not for Distribution outside intended recipient list.

## Pitch Stop Brace, Toyota GR Corolla – Install Manual

- 2.12. Torque the bolts to factory spec. The 14mm bolts going to the engine are 33 ft-lbs. The bolt/nut connecting the two pieces is 125 ft-lbs. And the chassis bolt that bolts on the chassis piece is 148 ft-lbs.



- 2.13. Congratulations on installing the Verus Engineering GR Corolla Pitch Stop Brace Kit!

- 2.14. Please send any questions, comments, concerns, or photos to Verus Engineering via e-mail; [support@verus-engineering.com](mailto:support@verus-engineering.com).



Confidential: Property of Verus Engineering. Not for Distribution outside intended recipient list.