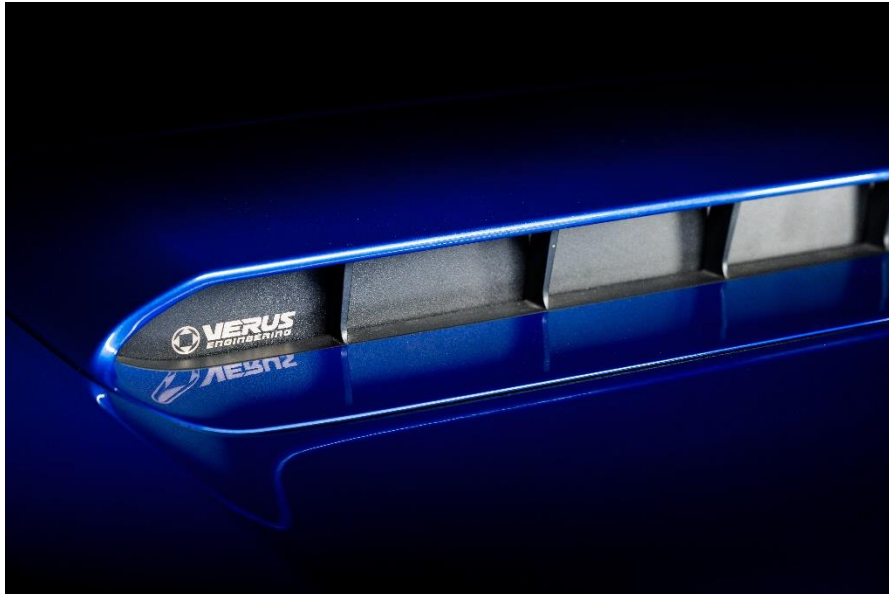


VERUS ENGINEERING

Hood Scoop Block-Off Kit – VB Subaru WRX Install Manual



Author: Clay Warner
Release Date: 2024/05/15
Approvals: E. Hazen

Document Revisions

Rev	Date	Author	Description
01	2024/05/15	C. Warner	Initial release of install manual

Hood Scoop Block-Off for VB Subaru WRX – Install Manual

CONTENTS

1. Introduction	<3>
1.1. Overview	<3>
1.2. Difficult	<3>
1.3. Time Required	<3>
1.4. Tools Needed	<3>
1.5. Hood Scoop Block-Off Components	<3>
2. Hood Scoop Block-Off Install	<4-6>

Hood Scoop Block-Off for VB Subaru WRX – Install Manual

1. Introduction

1.1. Overview: Detailed instructions on installing the hood scoop block-off for the VB Subaru WRX.

1.2. Difficulty: Easy

1.3. Time Required: 0.5-1 hour

1.4. Tools Needed:

1.4.1. 8mm Socket

1.4.2. Ratchet

1.4.3. 3mm Allen Wrench

1.4.4. Plastic Rivet Removal Tool or Flathead Screwdriver



1.5. Hood Scoop Block-Off Components

1.5.1. Hood Scoop Block-Off

1.5.2. Hardware Bag

1.5.2.1. (4) M5 x 0.8, 12mm Long BHCS (Button Head Cap Screw), Stainless

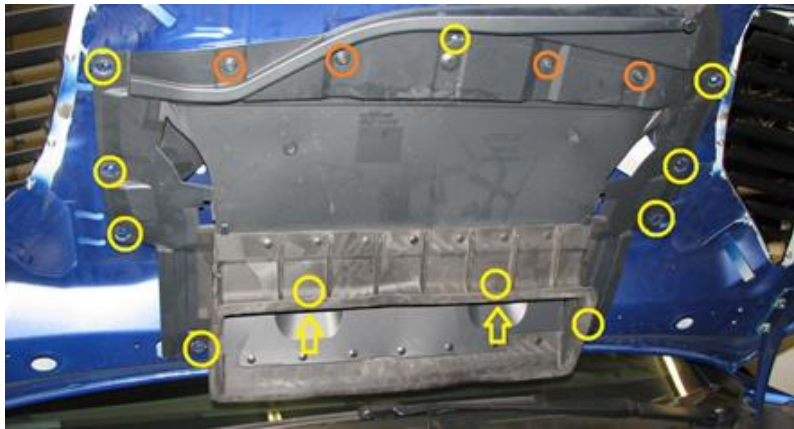
1.5.2.2. (4) M5 Flat Washer, Stainless



Hood Scoop Block-Off for VB Subaru WRX – Install Manual

2. VB Subaru WRX Hood Scoop Block-Off Install

- 2.1. Verus Engineering is not responsible for damage to you or your vehicle by following this manual and/or installing Verus Engineering products.
- 2.2. We begin by gaining access to the bottom of the hood by popping and lifting the hood.
- 2.3. We need to remove the OEM hood scoop itself for this install. To do so, we will need to remove the plastic push pin rivets (circled in yellow) and the 8mm bolts (circled in orange).



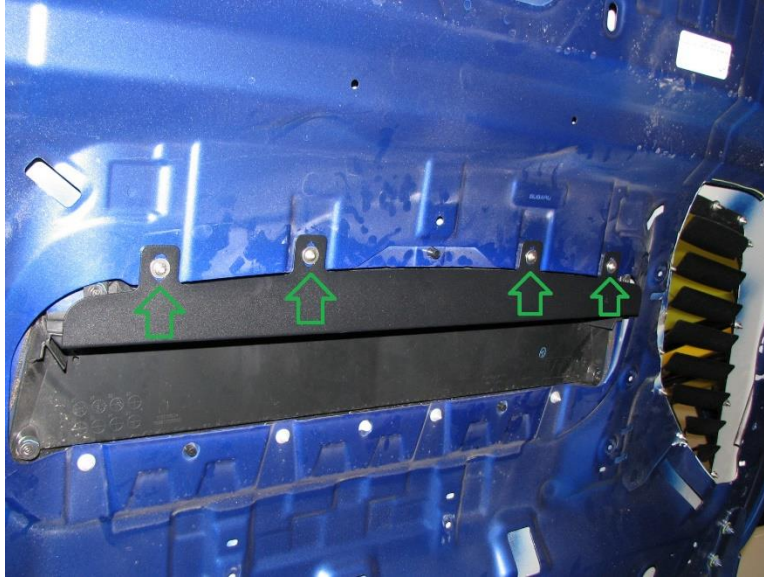
- 2.4. Below is a photo of the OEM hood scoop removed.



Confidential: Property of Verus Engineering. Not for Distribution outside intended recipient list.

Hood Scoop Block-Off for VB Subaru WRX – Install Manual

- 2.5. To install the Verus Engineering Hood Scoop Block-Off, we will be reusing the 4 threaded holes that we removed 8mm bolts from earlier. These are noted in the photo below by the green arrows.



- 2.6. Using your 3mm Allen key, install the M5 bolts and washers as shown above. Torque these to 3 ft-lbs.
- 2.7. Congratulations on installing the Verus Engineering Hood Scoop Block-Off Kit for the VB WRX.
- 2.8. Please send any questions, comments, concerns, or photos to Verus Engineering via e-mail; sales@verus-engineering.com.



Confidential: Property of Verus Engineering. Not for Distribution outside intended recipient list.

Hood Scoop Block-Off for VB Subaru WRX – Install Manual



Confidential: Property of Verus Engineering. Not for Distribution outside intended recipient list.