

# VERUS ENGINEERING

## Mk5 Toyota Supra Turbo Heatshield Kit

### Install Manual



Author: Eric Hazen

Release Date: 2020/01/11

Approvals: E. Hazen, C. Warner

#### Document Revisions

Rev	Date	Author	Description
01	2020/01/11	E. Hazen	Initial release of install manual

---

A90 Toyota Supra Heatshield Kit – Install Manual

# CONTENTS

1. Introduction .....	<3>
1.1. Overview .....	<3>
1.2. Difficulty .....	<3>
1.3. Time Required .....	<3>
1.4. Tools Needed .....	<3>
1.5. Turbo Heatshield Components .....	<3-4>
2. Turbo Heatshield Install .....	<4-7>

## A90 Toyota Supra Heatshield Kit – Install Manual

**1. Introduction**

**1.1. Overview:** Detailed instructions on installing the Turbo Heatshield kit for the Toyota Supra.

**1.2. Difficulty:** Beginner

**1.3. Time Required:** 0.5-1 hour

**1.4. Tools Needed:**

- 1.4.1.** Flat Head Screwdriver
- 1.4.2.** Ratchet
- 1.4.3.** 13mm Socket
- 1.4.4.** 4mm Allen Wrench / Allen Socket
- 1.4.5.** 5mm Allen Wrench / Allen Socket
- 1.4.6.** T20 Torx

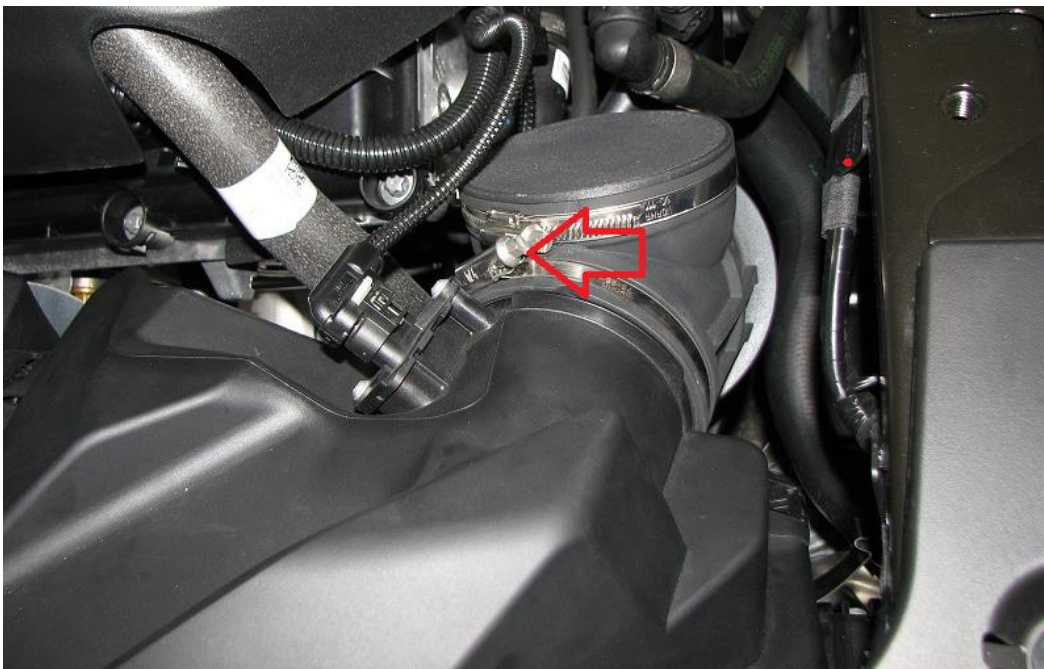
**1.5. Turbo Heatshield Components**

- 1.5.1.** (1) Main Turbo Heatshield Piece
- 1.5.2.** (1) Side Turbo Heatshield Piece
- 1.5.3.** (1) Hardware Kit
  - 1.5.3.1.** (2) M8x1.25 BHCS (Button Head Cap Screw) x 25mm Long, Stainless
  - 1.5.3.2.** (2) M8 Fender Washer, Stainless Steel
  - 1.5.3.3.** (2) M8 x 16mm Long Spacer, Aluminum
  - 1.5.3.4.** (5) M6x1.0 BHCS x 12mm Long, Stainless
  - 1.5.3.5.** (5) M6 Washer, Stainless Steel

## A90 Toyota Supra Heatshield Kit – Install Manual

**2. Turbo Heatshield Installation**

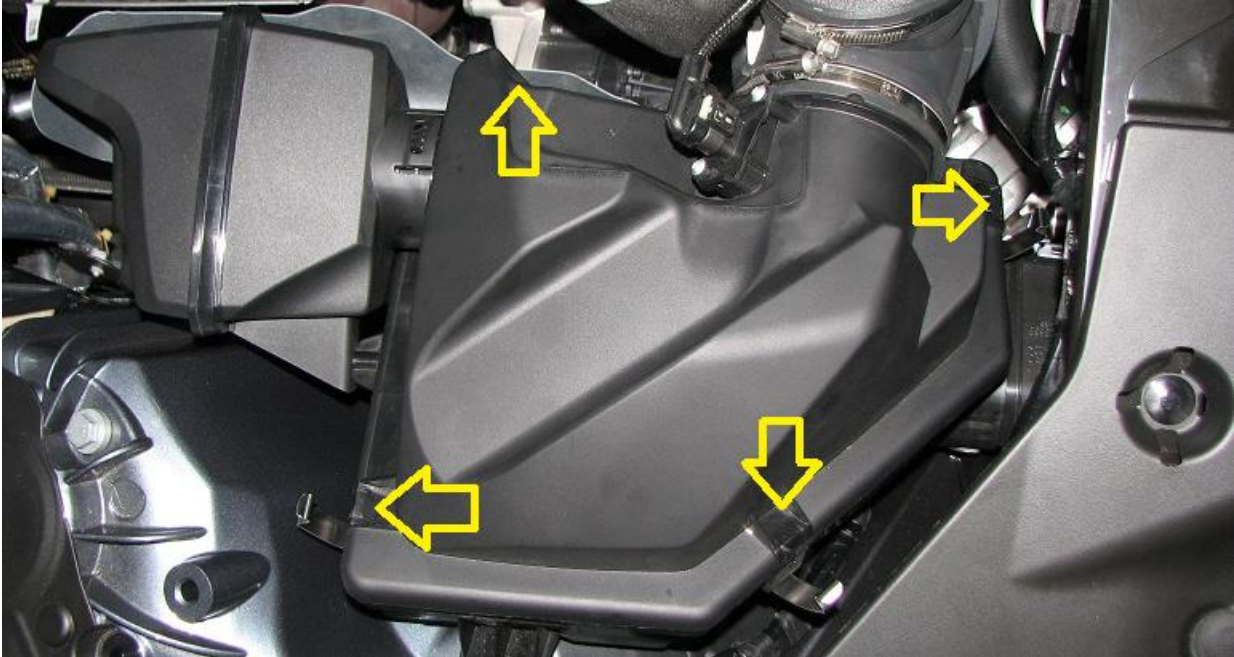
- 2.1. Verus is not responsible for damage to you or your vehicle by following this manual and/or installing Verus Engineering products
- 2.2. We begin by popping the hood.
- 2.3. Loosen hose clamp with flat head screw driver. This is shown below with a red arrow.



Confidential: Property of Verus Engineering. Not for Distribution outside intended recipient list.

## A90 Toyota Supra Heatshield Kit – Install Manual

**2.4.** Remove the (4) intake filter box clamps, these are pointed out with the (4) yellow arrows.



**2.5.** Flip the top of the intake box over onto the engine cover, being careful not to damage the IAT sensor wires.

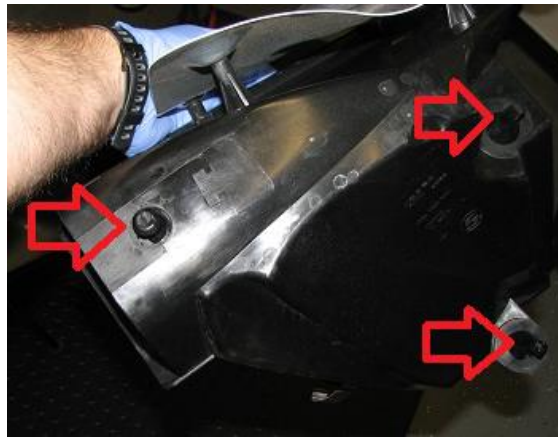
**2.6.** With the intake box out of the way, remove the filter and pull upward on the lower intake box. The box is held in place by rubber grommets; no bolts and nuts, it just takes a bit of force to remove from the vehicle.



## A90 Toyota Supra Heatshield Kit – Install Manual



- 2.7. Remove the rubber grommets from the air box and re-install into the chassis. This makes re-install easier.



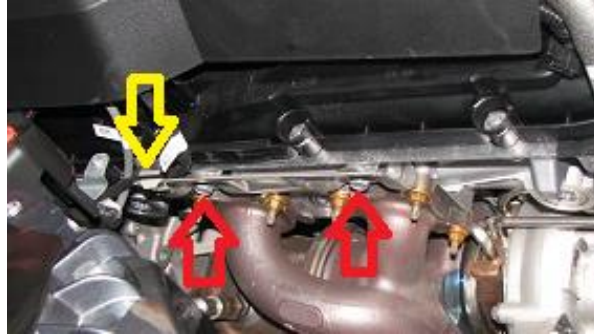
- 2.8. We will now have a clear shot to the turbo and can start the install of the Verus heatshield.



Confidential: Property of Verus Engineering. Not for Distribution outside intended recipient list.

## A90 Toyota Supra Heatshield Kit – Install Manual

- 2.9.** Remove the factory heat shield with the 13mm socket (red arrows). You will also have to remove the wire harness from the clip, which is shown by a yellow arrow.

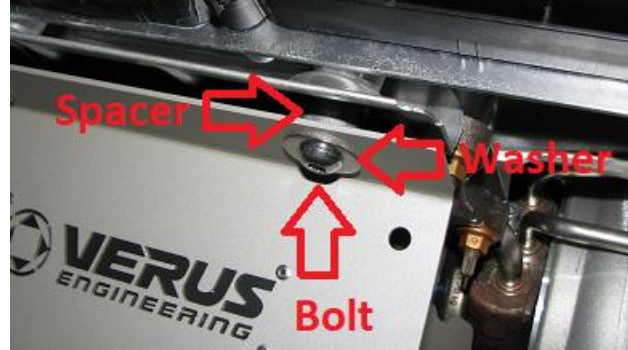


- 2.10.** Keep the OE heatshield as we will re-use it.
- 2.11.** Snake the side piece into place as shown below and lay it towards the front of the engine, again as shown below.



- 2.12.** We can now install the main heatshield component. You will use the M8x1.25 BHCS, then the washer, the heatshield next, followed by the M8 spacer, and finally the OE heatshield.

## A90 Toyota Supra Heatshield Kit – Install Manual



- 2.13. Tighten the m8 bolts to 8-10 ft-lbs.



- 2.14. Utilizing the supplied M6 hardware, we can install the main heatshield to the side heatshield. It is suggested to loosely install all the hardware initially.



- 2.15. Tighten this hardware to 4-6 ft-lbs.
- 2.16. If you are worried about clearance with the heatshield, you can modify the clearance slightly by pulling or pushing the heatshield and changing the top bend angle slightly.
- 2.17. Reinstall the o2 sensor wiring into the heatshield clip.

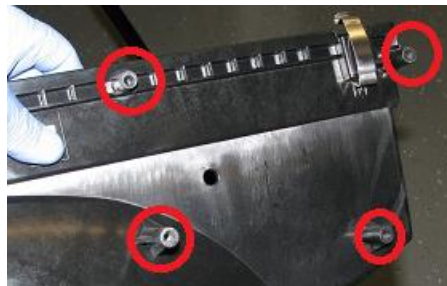
Confidential: Property of Verus Engineering. Not for Distribution outside intended recipient list.



## A90 Toyota Supra Heatshield Kit – Install Manual



- 2.18.** Remove the OE heatshield from the bottom of the air box by removing (4) T20 Torx bolts.



- 2.19.** Reinstall the intake components in reverse order.
- 2.20.** This concludes the turbo heatshield kit for the Toyota Supra. Please send any comments, concerns, questions, and general feedback to Verus Engineering via [sales@verus-engineering.com](mailto:sales@verus-engineering.com).

A90 Toyota Supra Heatshield Kit – Install Manual



Confidential: Property of Verus Engineering. Not for Distribution outside intended recipient list.