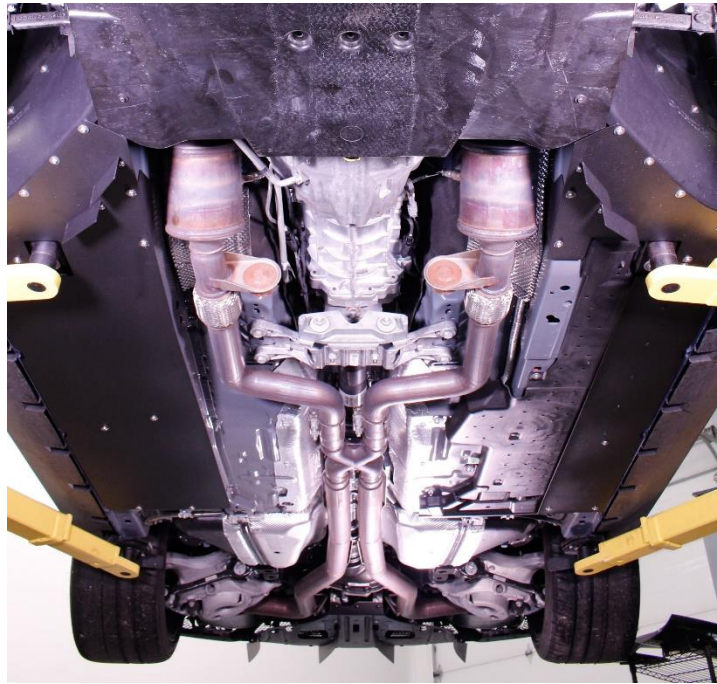


VERUS ENGINEERING

Flat Underbody Panel Kit– Ford Mustang Shelby GT350

Install Manual



Author: Tom Lang
Release Date: 2022/28/2
Approvals: E. Hazen
Document Revisions

Rev	Date	Author	Description
01	2022/28/2	T. Lang	Initial release of install manual

Flat Underbody Panel Kit, Ford Mustang Shelby GT350 – Install Manual

CONTENTS

1. Introduction.....	<3>
1.1. Overview.....	<3>
1.2. Difficulty.....	<3>
1.3. Time Required.....	<3>
1.4. Tools Needed	<3>
1.5. Flat Underbody Panel Kit Components.....	<3-4>
1.6. Turning Vane Kit Components	<4-5>
2. Flat Underbody Panel Kit Install	<5-12>

Flat Underbody Panel Kit, Ford Mustang Shelby GT350 – Install Manual

1. Introduction

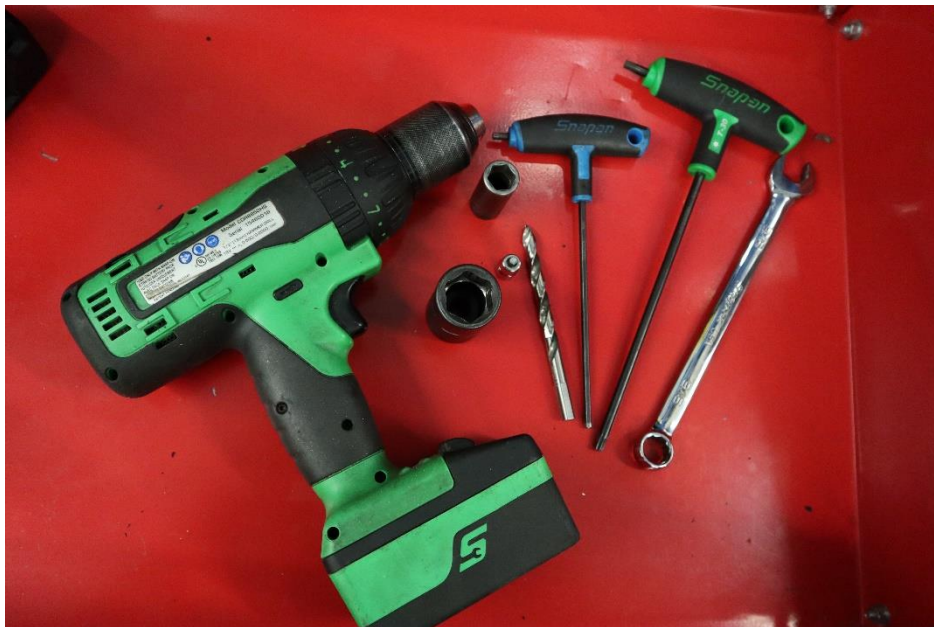
1.1. Overview: Detailed instructions on installing the Verus Engineering Flat Underbody Panel Kit for the Ford Mustang Shelby GT350.

1.2. Difficulty: Moderate - Easy

1.3. Time Required: Approximately 1.5 hours

1.4. Tools Needed:

- 1.4.1. Ratchet
- 1.4.2. Drill
- 1.4.3. 3/8" Drill Bit
- 1.4.4. 5mm Allen Wrench or socket
- 1.4.5. 4mm Allen Wrench or socket
- 1.4.6. T30 Torx Socket or wrench
- 1.4.7. 23mm Socket or wrench
- 1.4.8. Small screw driver
- 1.4.9. 9/16 wrench

**1.5. Flat Underbody Panel Kit Components**

- 1.5.1. (1) Driver Side Rear Underbody Panel
- 1.5.2. (1) Driver Side Front Underbody Panel
- 1.5.3. (1) Passenger Side Underbody Panel
- 1.5.4. (6) Underbody Panel Mounting Bracket

Confidential: Property of Verus Engineering. Not for Distribution outside intended recipient list.

Flat Underbody Panel Kit, Ford Mustang Shelby GT350 – Install Manual

- 1.5.4.1. (1) Driver Side Front Bracket
- 1.5.4.2. (1) Driver Side Middle Bracket
- 1.5.4.3. (1) Driver Side Rear Bracket
- 1.5.4.4. (1) Passenger Side Front Bracket
- 1.5.4.5. (1) Passenger Side Middle Bracket
- 1.5.4.6. (1) Passenger Side Rear Bracket
- 1.5.5. Hardware Bag**
 - 1.5.5.1. (22) M6 x 1.0 16mm Long Button Head Cap Screw, Stainless
 - 1.5.5.2. (22) M6 18mm OD Washer, Stainless
 - 1.5.5.3. (1) M6 x 1.0 Heavy Duty Rivet Nut
 - 1.5.5.4. (1) M6 x 1.0 Hex Rivet Nut
 - 1.5.5.5. (1) M6 x 1.0 Fold-nut
 - 1.5.5.6. (2) 3" Strip of 1/8" Foam Adhesive
 - 1.5.5.7. Rivet Nut Installer Tool Assembly – M6 x 1.0
 - 1.5.5.7.1. M6 x 1.0 35mm Long Socket Head Cap Screw
 - 1.5.5.7.2. M6 Rivet Nut Install Tool

**1.6. Turning Vane Kit Components**

- 1.6.1.1. (4) Turning Vane
- 1.6.1.2. (9) M6 x 1.0 12mm Long Button Head Cap Screw, Stainless
- 1.6.1.3. (9) M6 12mm OD Washer, Stainless

Flat Underbody Panel Kit, Ford Mustang Shelby GT350 – Install Manual



****For Turning Vane Kit installation skip to step 3.1.****

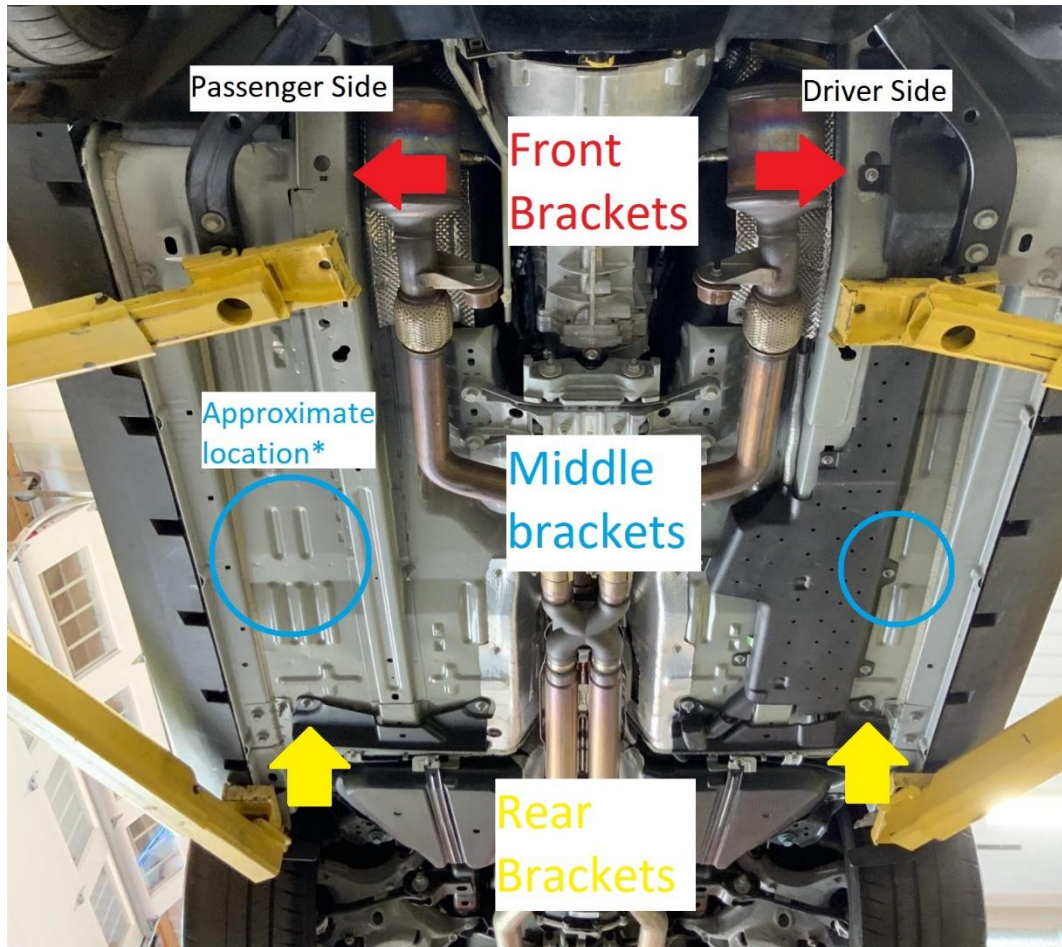
2. Flat Underbody Panel Kit Install

2.1. Verus Engineering is not responsible for damage to you or your vehicle by following this manual and/or installing Verus Engineering products.

2.2. Jack the vehicle up and support it securely.

2.2.1. On the following page is an overview of the working area in which we will be installing the brackets to hold the flat underbody panels.

Flat Underbody Panel Kit, Ford Mustang Shelby GT350 – Install Manual

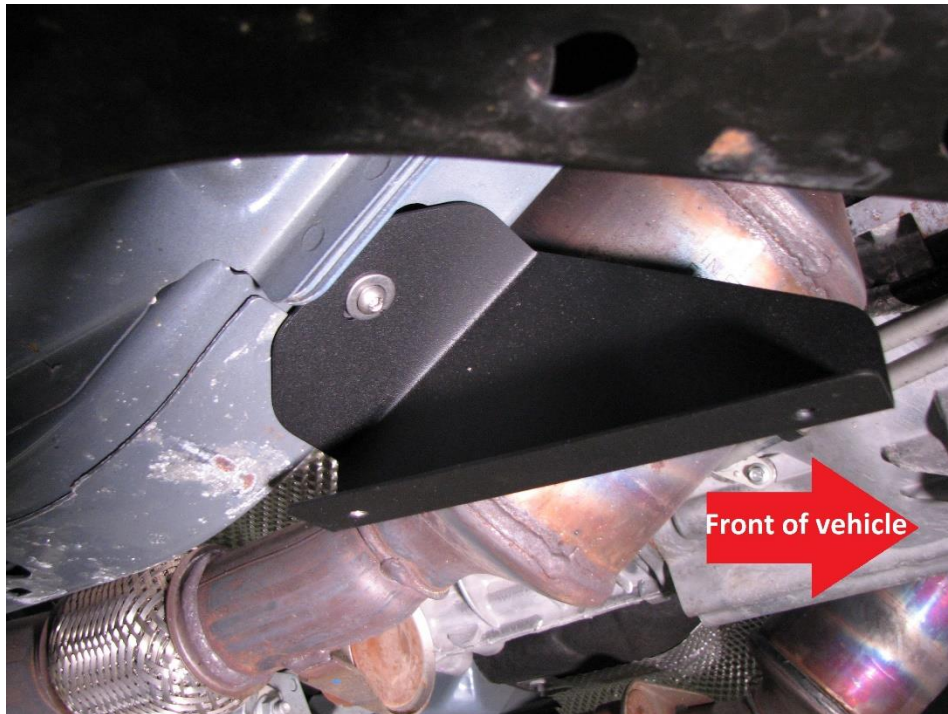


- 2.3. Install the M6 x 1.0 fold-nut into the passenger side front bracket mounting hole. The location of the hole is directly left of the catalytic converter as viewed from the front of the vehicle. Look for a large (about 1.25") hole with a square hole below it.
- 2.4. When installing the M6 x 1.0 fold-nut, making sure the tang “snaps” into the square hole. Use the following picture as a reference.

Flat Underbody Panel Kit, Ford Mustang Shelby GT350 – Install Manual



2.5. Install the passenger side front bracket making sure it points straight ahead as shown.

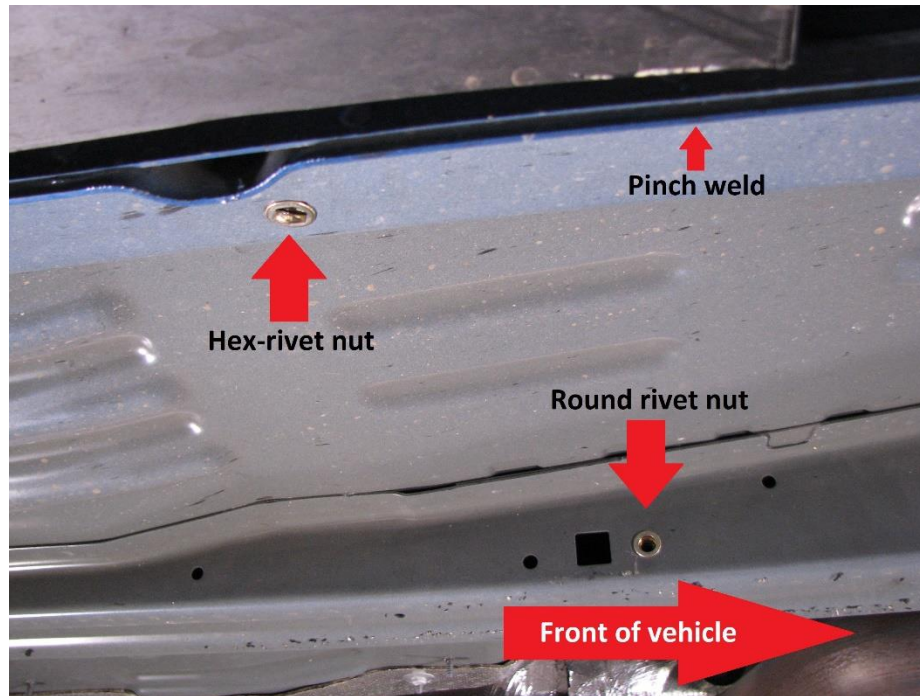


2.6. Next, we will be installing two rivet nuts, one hex-rivet nut, and one round rivet nut.

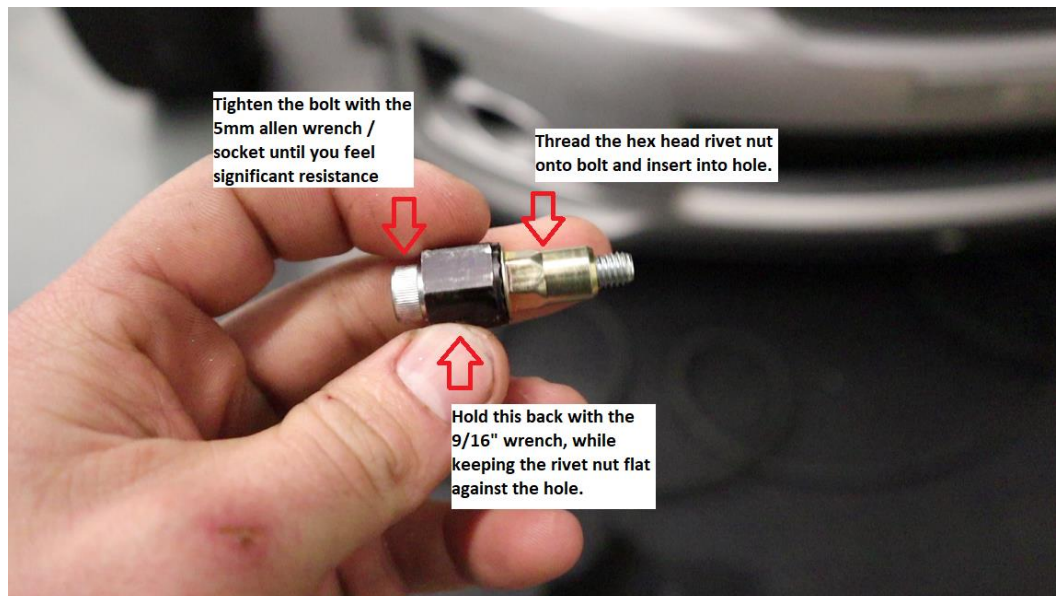
Confidential: Property of Verus Engineering. Not for Distribution outside intended recipient list.

Flat Underbody Panel Kit, Ford Mustang Shelby GT350 – Install Manual

2.6.1. The orientation for which rivet nut goes where is shown below.



2.6.2. Using the instructions below, install the hex-rivet nut into the center of the square hole.



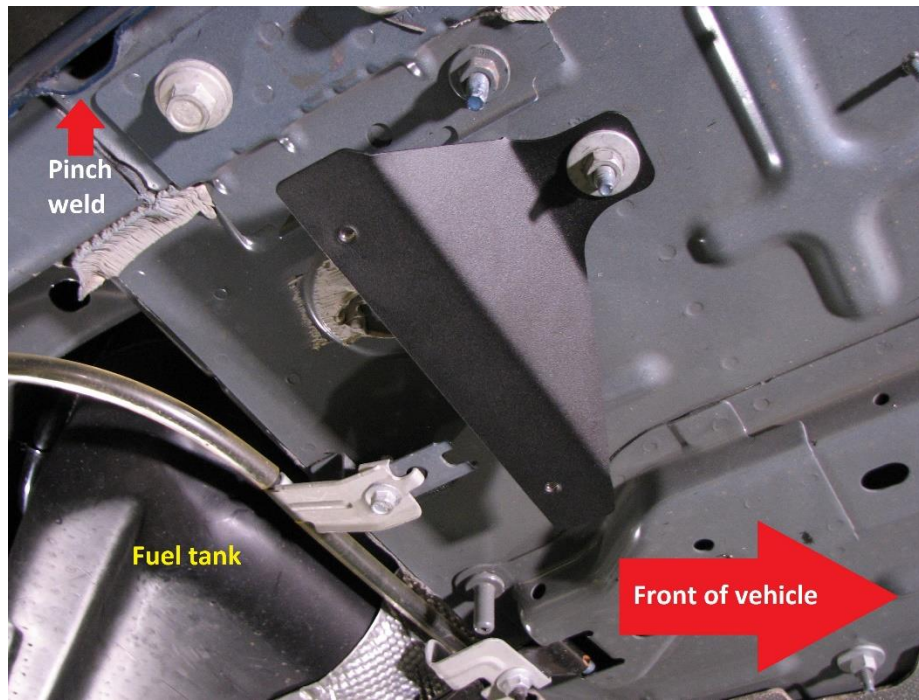
2.6.3. Next we will install the round rivet nut. To do so, open up the round hole to 3/8", and install the round rivet nut in the same manner as the hex-rivet nut.

Flat Underbody Panel Kit, Ford Mustang Shelby GT350 – Install Manual

- 2.6.4. Install the passenger side middle bracket as shown by using two 16mm long M6 BHCS, and 18mm fender washers. Tighten to 6 ft-lbs.



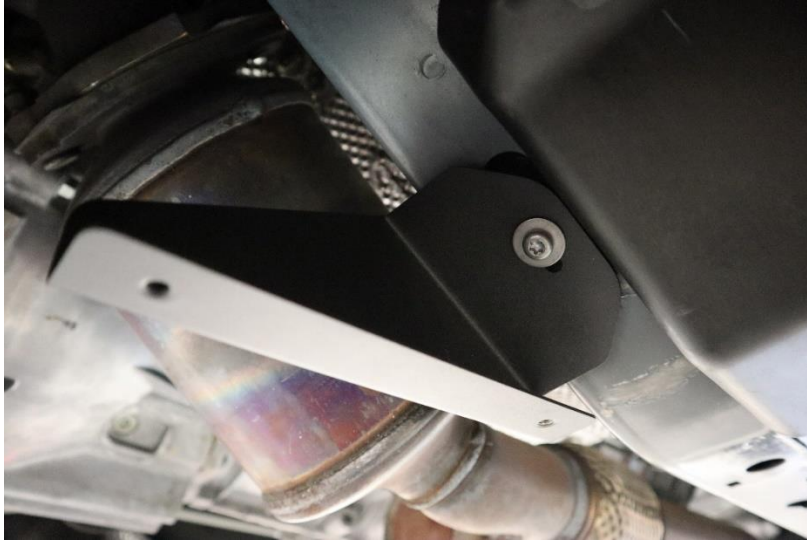
- 2.7. Install the passenger rear bracket parallel with the fuel tank as shown. Use a 13mm socket, and the existing nut on the vehicle. Tighten to 13 ft-lbs.



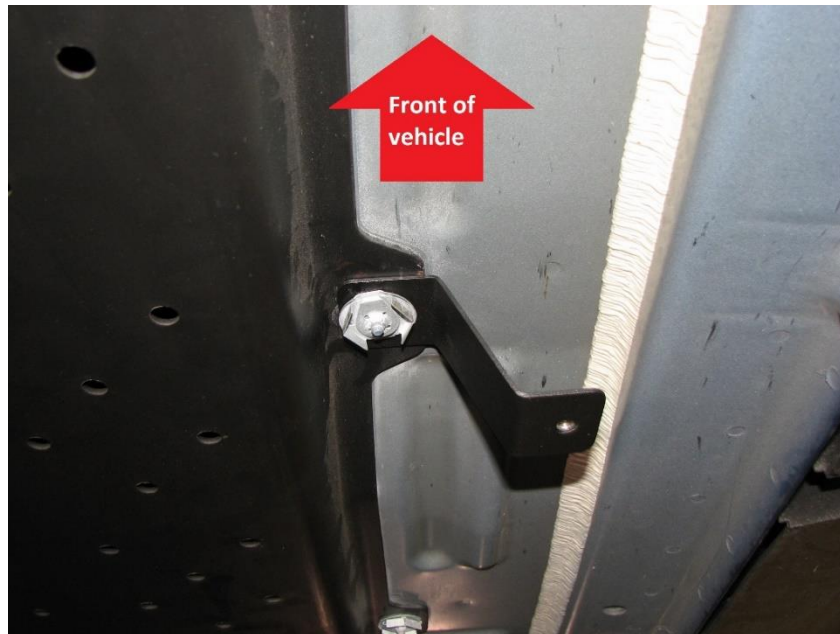
Confidential: Property of Verus Engineering. Not for Distribution outside intended recipient list.

Flat Underbody Panel Kit, Ford Mustang Shelby GT350 – Install Manual

- 2.8.** Install the Driver side front bracket using the existing T30 Torx head bolt. Tighten an additional 1/8 to 1/4 turn past tight. These are plastic threads, and will strip easily.

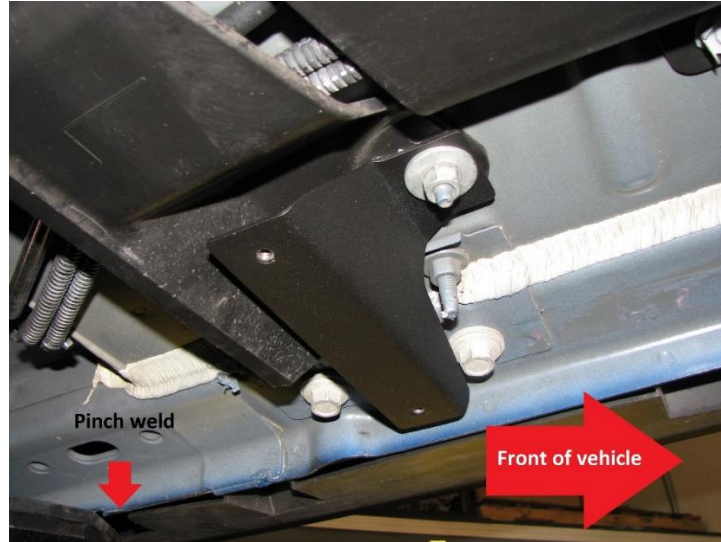


- 2.9.** Install the driver side middle bracket using the existing “nut” as shown. It is the forward-most “nut” of the two on the car. This should come off by hand, however a 23mm socket can help with removal and installation. Tighten only by hand.



- 2.9.1.** Install the driver side rear bracket using the existing 13mm-head nut. Align the bracket parallel with the fuel tank. Tighten to approximately 13 ft-lbs.

Flat Underbody Panel Kit, Ford Mustang Shelby GT350 – Install Manual

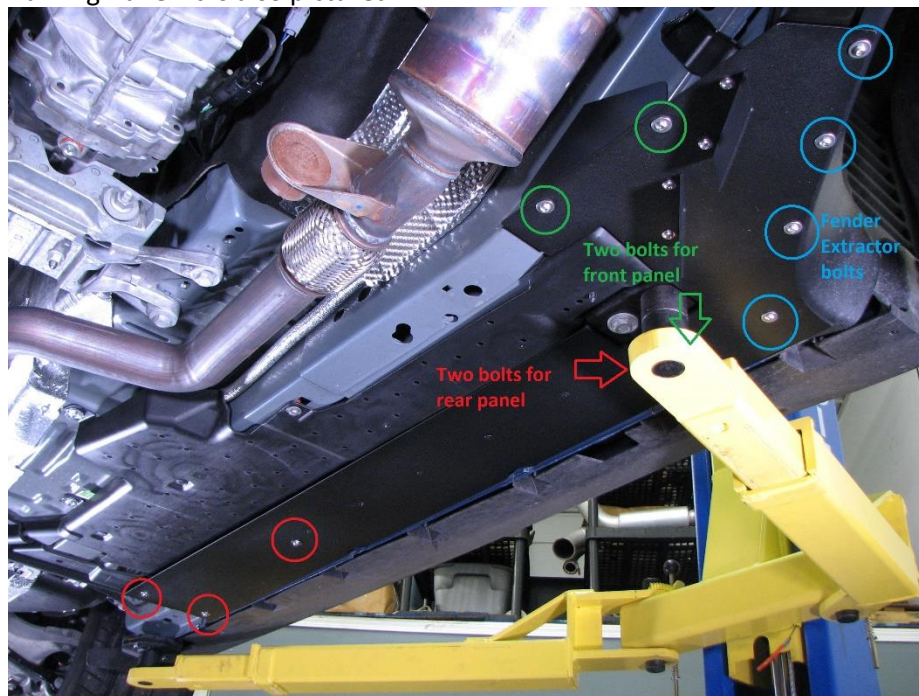


2.10. We are now ready to install the Flat Underbody Panels.

2.10.1. Starting with the driver side rear underbody panel, use five **M6 BHCS, and five 18mm washers**, and install the panel. Tighten the bolts to 6 ft-lbs.

2.10.2. Remove the four **M6 BHCS** installed in the Fender Extractor.

2.10.3. Using four more **M6 BHCS, and 18mm washers** from install the driver side front underbody panel. Tighten to 6 ft-lbs. It should look like the picture below. ****Optional Turning Vane kit is also pictured****

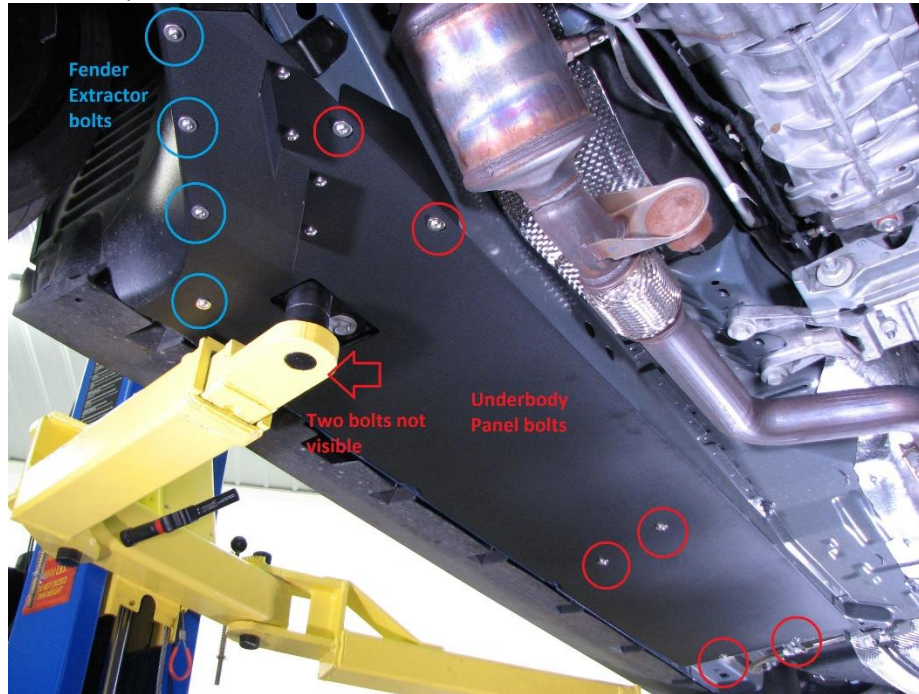


Confidential: Property of Verus Engineering. Not for Distribution outside intended recipient list.

Flat Underbody Panel Kit, Ford Mustang Shelby GT350 – Install Manual

2.11. Remove the four pre-installed **M6 BHCS** from the Fender Extractor.

2.11.1. Install the passenger side under body panel using eight **M6 BHCS, and eight 18mm washers**. Tighten to 6 ft-lbs. It should look like the picture below. ****Optional Turning Vane kit is also pictured****



2.12. At this point you may choose to install some strips of foam tape between the underbody panel and the frame rails. The panels did not rattle on our test vehicle however the potential is still there. This is purely optional.

****Optional Turning Vane Kit Installation****

3. Locate the slots with two holes on the forward section of both under body panels that look like this >> 😊.

 - 3.1. Slide the Turning Vanes into the slots making sure the flange corresponds with the holes in the underbody panels.
 - 3.2. Install two 12mm long M6 BHCS, and two 12mm washers for each turning vane. Tighten to 6 ft-lbs.

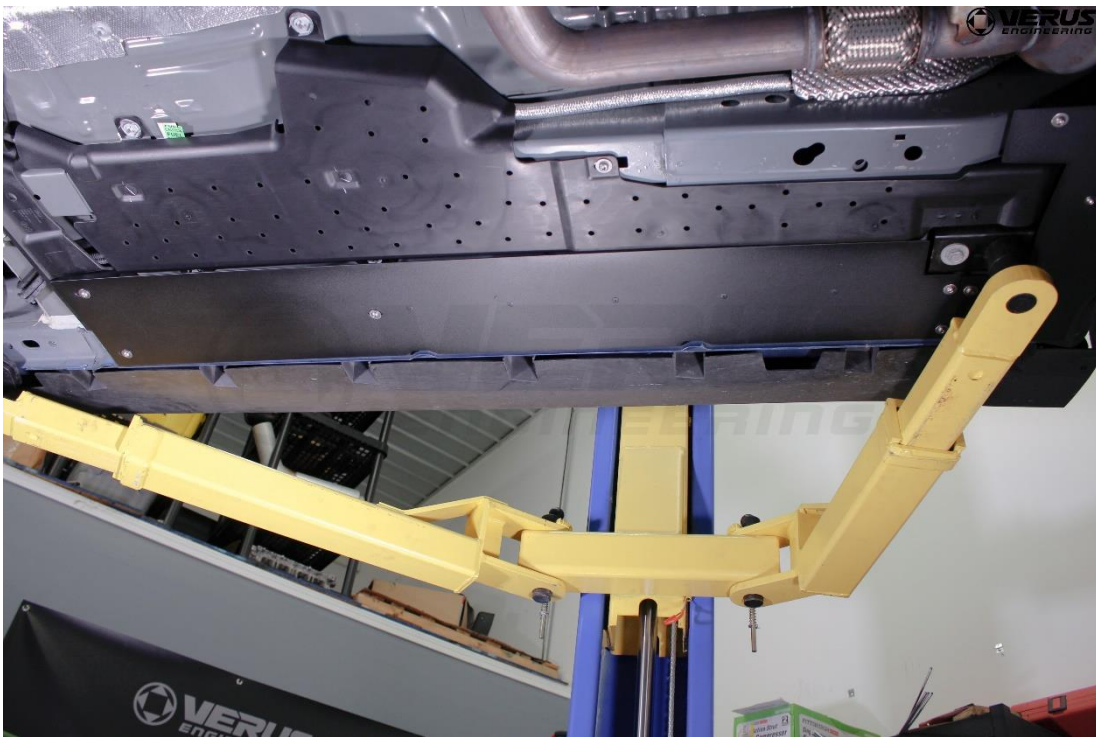
Flat Underbody Panel Kit, Ford Mustang Shelby GT350 – Install Manual



3.3. Congratulations on installing the Flat Underbody Panels, and Turning Vane Kit for Shelby GT350!

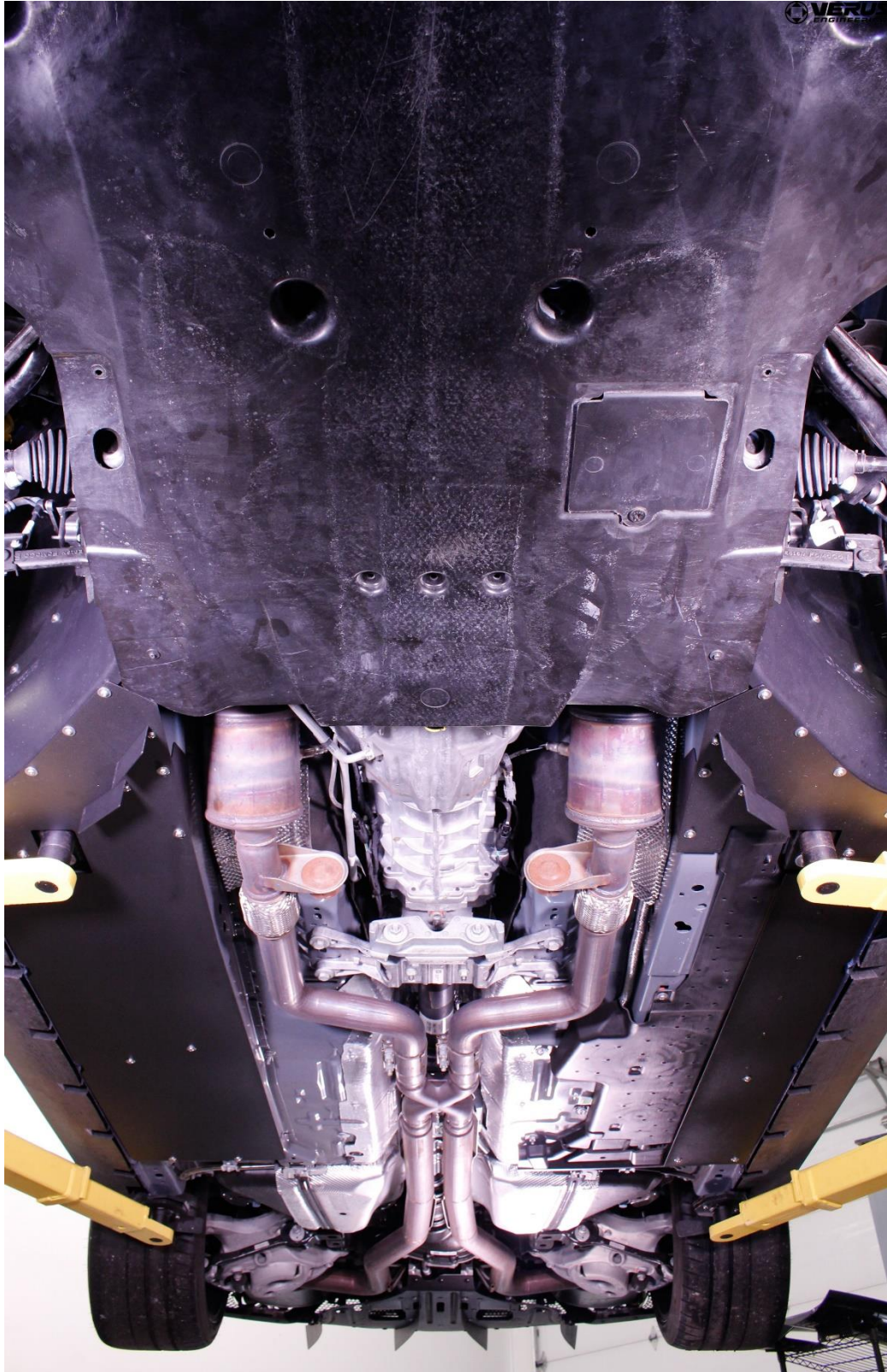
3.4. Please send any questions, comments, concerns, or photos to Verus Engineering via e-mail; sales@verus-engineering.com.

Flat Underbody Panel Kit, Ford Mustang Shelby GT350 – Install Manual



Confidential: Property of Verus Engineering. Not for Distribution outside intended recipient list.

Flat Underbody Panel Kit, Ford Mustang Shelby GT350 – Install Manual



Confidential: Property of Verus Engineering. Not for Distribution outside intended recipient list.