

VERUS ENGINEERING

Fender Evacuation Kit – Shelby GT350

Install Manual



Author: Tom Lang

Release Date: 2021/22/11

Approvals: E. Hazen, T. Lang, C. Warner

Document Revisions

Rev	Date	Author	Description
01	2021/22/11	T. Lang	Initial release of install manual

Confidential: Property of Verus Engineering. Not for Distribution outside intended recipient list.

Fender Evacuation Kit, Shelby GT350 – Install Manual

CONTENTS

1. Introduction	<3>
1.1. Overview	<3>
1.2. Difficulty	<3>
1.3. Time Required	<3>
1.4. Tools Needed	<3>
1.5. Fender Evacuation Kit Components	<4>
2. Fender Evacuation Kit Install	<4-12>

Fender Evacuation Kit, Shelby GT350 – Install Manual

1. Introduction

1.1. Overview: Detailed instructions on installing the Verus Engineering Fender Evacuation Kit for the Shelby GT350.

1.2. Difficulty: Easy

1.3. Time Required: Approximately 1-2 hours

1.4. Tools Needed:

- 1.4.1. Ratchet
- 1.4.2. Drill
- 1.4.3. 3/8" Drill Bit (Or Step Drill Bit)
- 1.4.4. 11/64" Drill Bit (Or Step Drill Bit)
- 1.4.5. T35 Torx Head/Bit
- 1.4.6. 5mm Allen Wrench or socket
- 1.4.7. 4mm Allen Wrench or socket
- 1.4.8. Small screw driver
- 1.4.9. 9/16 wrench
- 1.4.10. Sharpie

**1.5. Fender Evacuation Kit Components**

- 1.5.1. (1) Left Fender Evacuator
- 1.5.2. (1) Right Fender Evacuator
- 1.5.3. (1) Left Bracket
- 1.5.4. (1) Right Bracket

Confidential: Property of Verus Engineering. Not for Distribution outside intended recipient list.

Fender Evacuation Kit, Shelby GT350 – Install Manual

1.5.5. Hardware Bag

- 1.5.5.1. (15) M6 x 1.0 16mm Long Button Head Cap Screw, Stainless
- 1.5.5.2. (6) M6 x 1.0 20mm Long Button Head Cap Screw, Stainless
- 1.5.5.3. (6) M6 x 14mm Long Torx Head Cap Screw
- 1.5.5.4. (22) M6 18mm OD Washer, Stainless
- 1.5.5.5. (6) M6 x 1.0 Plastic Rivet Nut
- 1.5.5.6. (2) M6 x 1.0 Hex Head Rivet Nut
- 1.5.5.7. (1) Rivet Nut Installer Tool – M6 x 1.0



2. Fender Liner Extractor Kit Install

- 2.1. Verus Engineering is not responsible for damage to you or your vehicle by following this manual and/or installing Verus Engineering products.
- 2.2. Jack the vehicle up and support it securely.
- 2.3. Remove the front wheels.
- 2.4. Remove the two rearward bolts holding the factory underbody panel on. This will allow us to pull it down when we install the Fender Evacuator.

Fender Evacuation Kit, Shelby GT350 – Install Manual



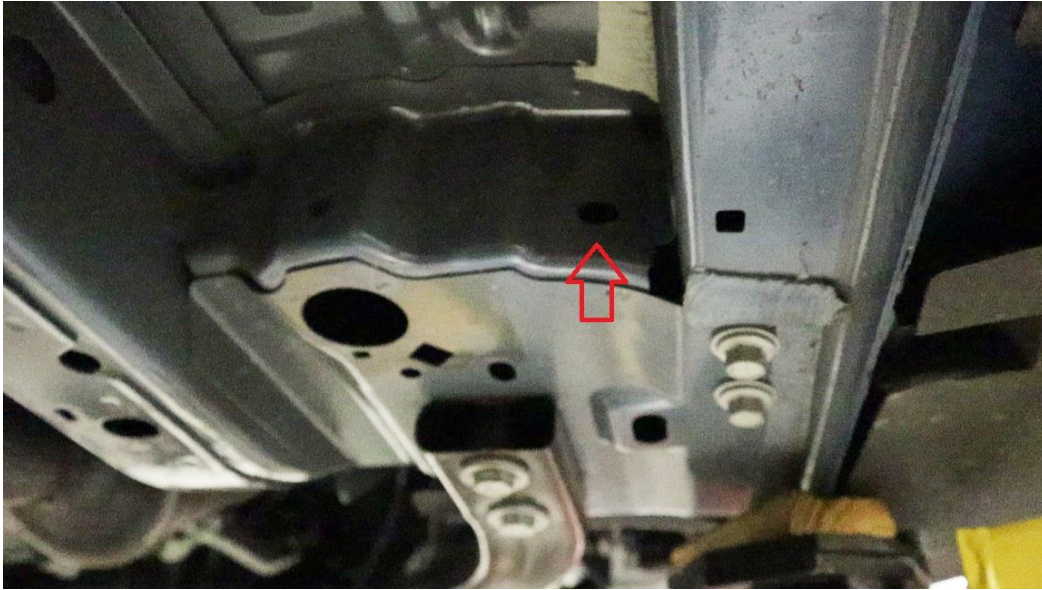
2.5. Locate the slotted hole we will be installing the hex head rivet nut into.

2.5.1. It is located behind the wheel well (towards the rear of the vehicle)

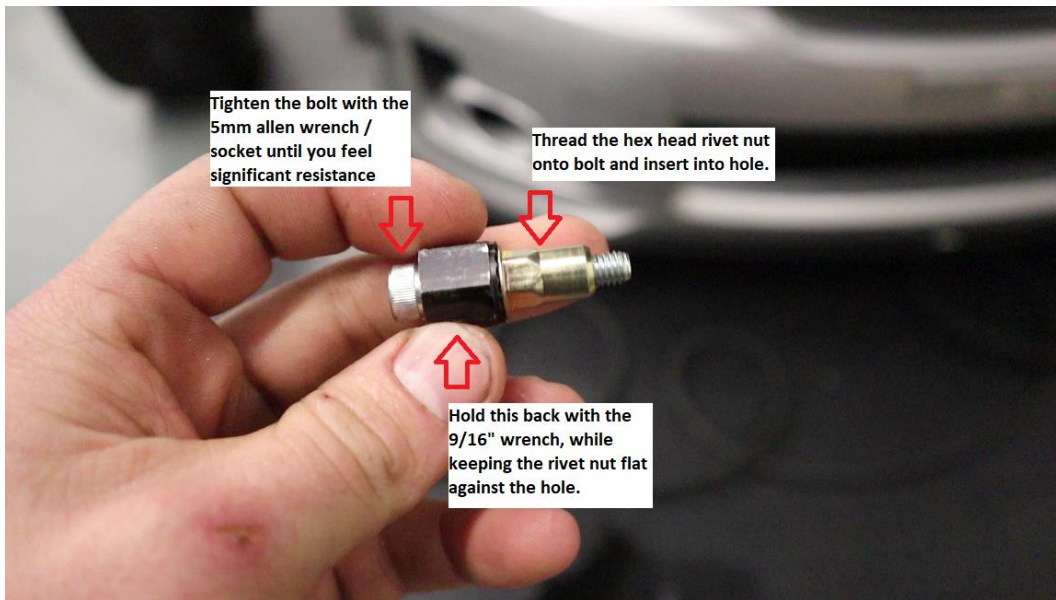


Confidential: Property of Verus Engineering. Not for Distribution outside intended recipient list.

Fender Evacuation Kit, Shelby GT350 – Install Manual



2.6. Using the instructions below, install the hex body rivet nut into the center of the slotted hole.



Fender Evacuation Kit, Shelby GT350 – Install Manual



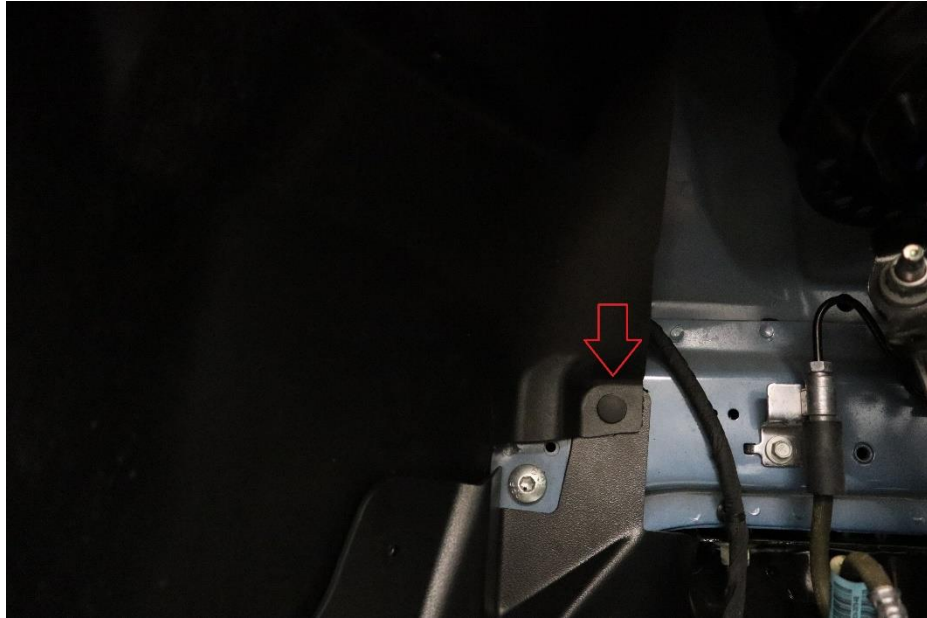
2.7. Install the Fender Evacuator bracket using a 16mm M6 x 1.0 BHCS and 18mm fender washer.



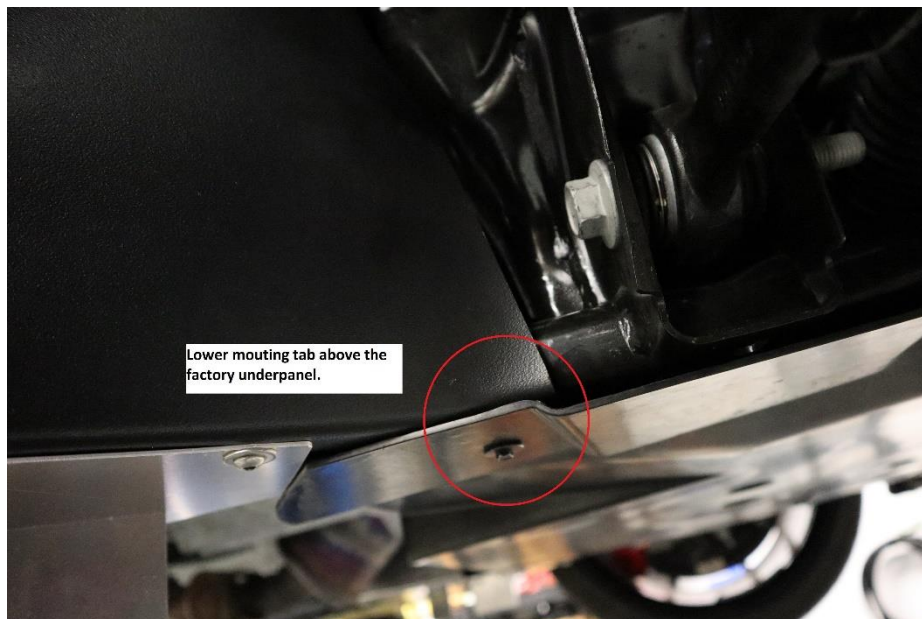
2.8. Now we will loosely install the Fender Evacuator to mark the holes for drilling.

2.8.1. Remove the factory plastic clip shown.

Fender Evacuation Kit, Shelby GT350 – Install Manual



- 2.8.2.** Line up the Fender Evacuator with the hole for the factory plastic clip, and re-install the clip with the Fender Evacuator behind / under the factory fender liner.
- 2.8.3.** Make sure the lower mounting tab for the Fender Evacuator is ABOVE the factory underpanel we loosened in step 2.4.

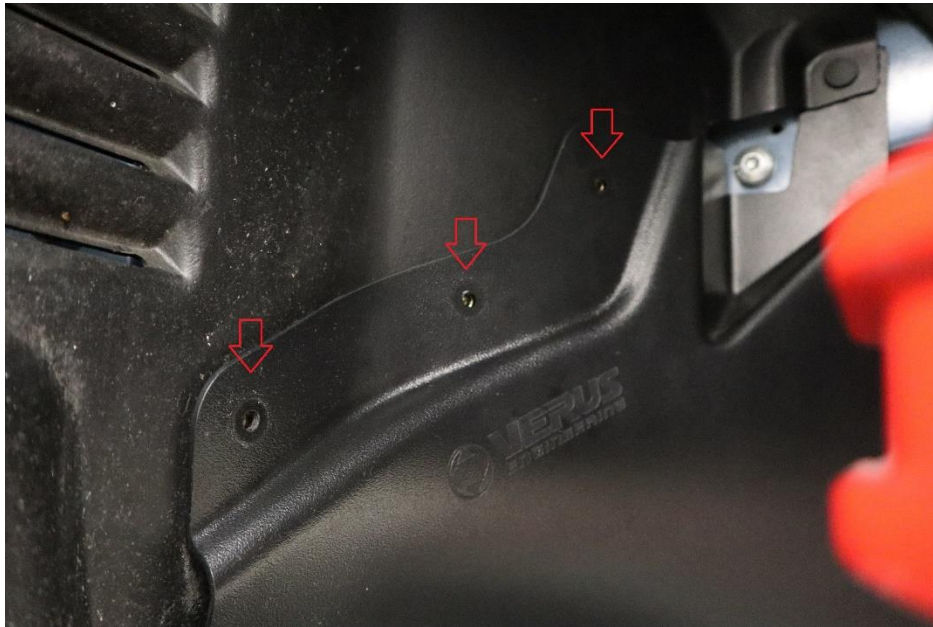


- 2.8.4.** Next, use two 16mm long M6x1.0 BHCS to loosely bolt the Fender Evacuator to the mounting bracket that was previously installed.

Confidential: Property of Verus Engineering. Not for Distribution outside intended recipient list.

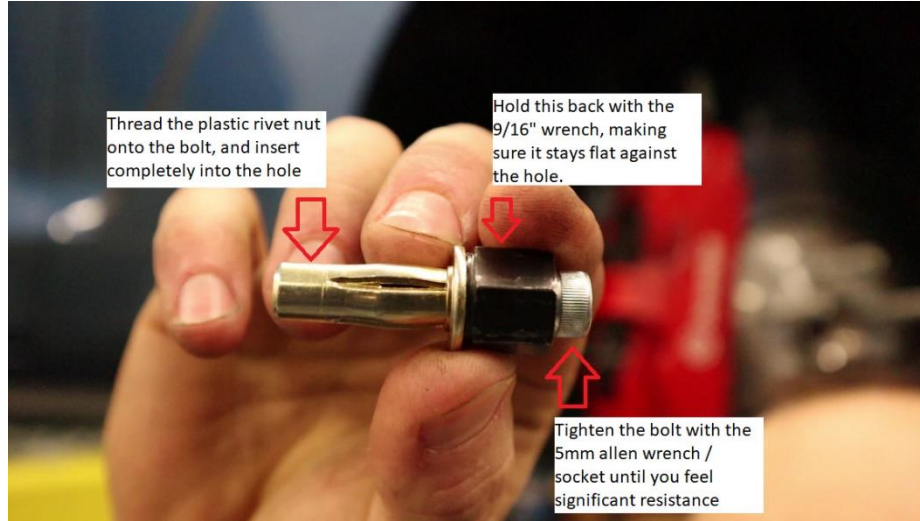
Fender Evacuation Kit, Shelby GT350 – Install Manual

- 2.9.** With the Fender Evacuator loosely bolted in place, push it against the factory fender liner and mark the holes with a sharpie. Once the holes are marked, remove the Fender Evacuator.



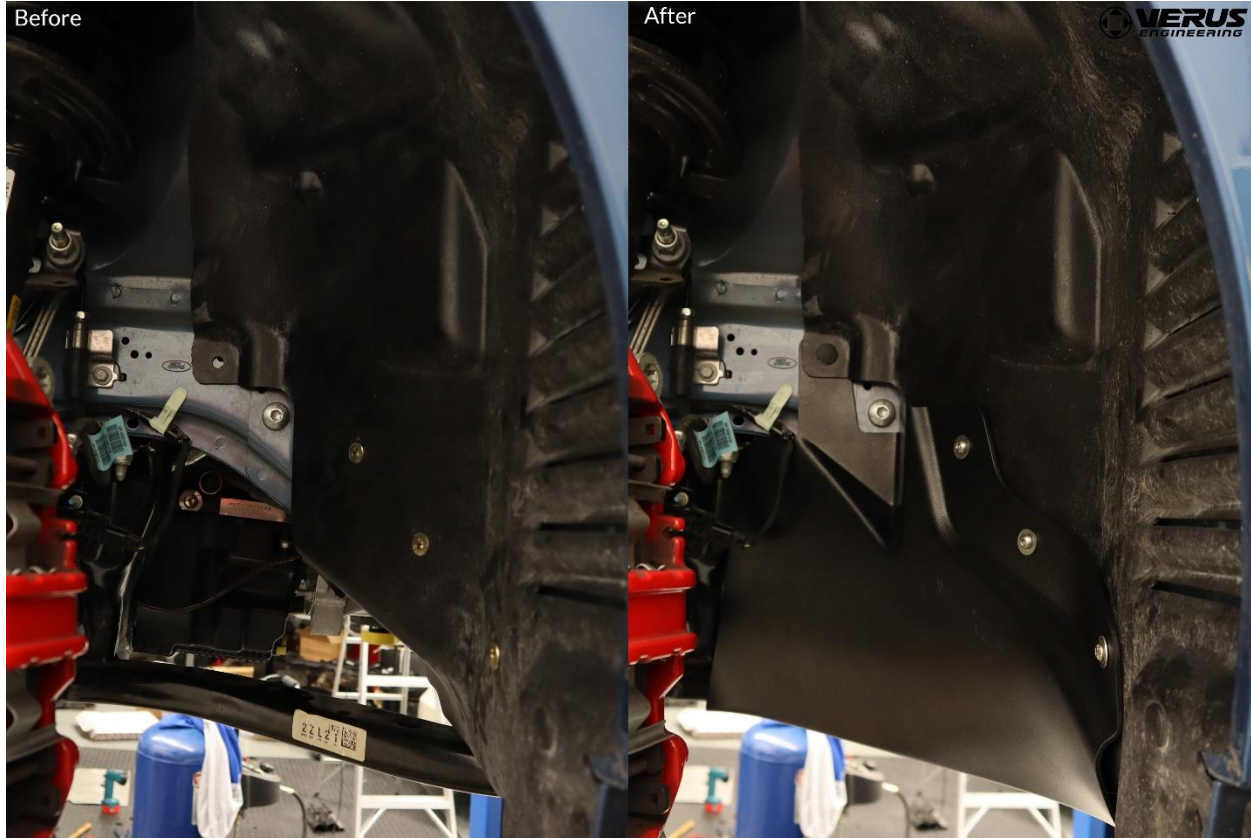
- 2.10.** Now it is time to choose between installing the rivet nuts or plastic screws.
- 2.11.** If you go with the plastic screw option, use the 11/64" drill bit in these 3 locations.
- 2.12.** Once the holes are drilled, use a T35 Torx Head Bit to install the plastic screws.
- 2.13.** If you choose to go with the rivet nut option, we will drill the marked holes with the 3/8" drill bit.
- 2.13.1.** To install the plastic rivet nuts, the holes will need to be drilled to 3/8". The actual installation of the rivet nut will be the same as before with the hex head rivet nut. Below is a refresher.

Fender Evacuation Kit, Shelby GT350 – Install Manual



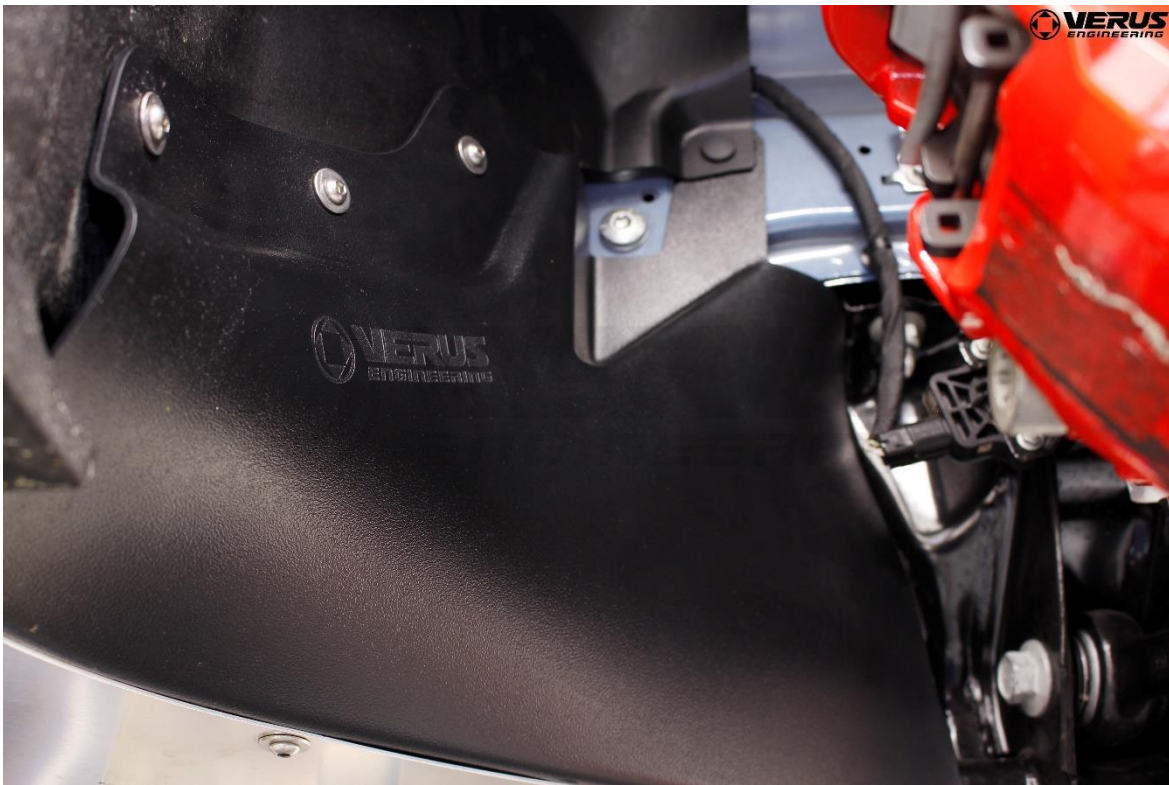
- 2.14. With the rivet nuts installed, we can begin final installation of the Fender Evacuator.
- 2.15. First slide the upper mounting tab of the Fender Evacuator UNDER the factory fender liner, just like in step 2.8.2, and install the OEM plastic clip. Then slide the lower mounting tab ABOVE the factory under panel.
- 2.16. At this point, all of the bolt holes should line up. Start all the bolts first by hand, threading them in 2-3 turns before tightening them down to around 6 ft-lbs. Use the 20mm long BHCS with an 18mm washer in the 3 locations where you just installed the rivet nuts.
- 2.17. Tighten the bolts on the factory underbody panel.
- 2.18. Install the Verus Fender Liner to the bracket installed in 2.7.
- 2.19. Congratulations on installing the Fender Evacuation Kit for Shelby GT350!
- 2.20. Please send any questions, comments, concerns, or photos to Verus Engineering via e-mail; sales@verus-engineering.com.

Fender Evacuation Kit, Shelby GT350 – Install Manual



Confidential: Property of Verus Engineering. Not for Distribution outside intended recipient list.

Fender Evacuation Kit, Shelby GT350 – Install Manual



Confidential: Property of Verus Engineering. Not for Distribution outside intended recipient list.