

VERUS ENGINEERING

Carbon Side Marker – BRZ / FRS / GT86

Install Manual



Author: Eric Hazen

Release Date: 2018/11/21

Approvals: E. Hazen, P. Lucas

Document Revisions

Rev	Date	Author	Description
01	2018/11/21	E. Hazen	Initial release of install manual
02	2018/12/12	C. Warner	Instructions Update

CONTENTS

Confidential: Property of Verus Engineering. Not for Distribution outside intended recipient list.

Carbon Side Marker, BRZ/FRS/GT86 – Install Manual

1. Introduction	<3>
1.1. Overview	<3>
1.2. Difficult	<3>
1.3. Time Required	<3>
1.4. Tools Needed	<3>
1.5. Carbon Side Marker Components	<3-4>
2. Carbon Side Marker Install	<4-9>

Carbon Side Marker, BRZ/FRS/GT86 – Install Manual**1. Introduction**

1.1. Overview: Detailed instructions on installing the Verus Engineering carbon side markers for the FRS/BRZ/GT86.

1.2. Difficulty: Easy

1.3. Time Required: 1-1.5 hour

1.4. Tools Needed:

- 1.4.1. Extension
- 1.4.2. Swivel
- 1.4.3. Ratchet
- 1.4.4. 7mm Socket/Wrench
- 1.4.5. 10mm Wrench
- 1.4.6. 2.5mm Allen Wrench
- 1.4.7. 4mm Allen Wrench/Socket
- 1.4.8. Sand Paper/File
- 1.4.9. Drill
- 1.4.10. Small drill bit (3/16" preferred)



1.5. Carbon Side Marker Components

- 1.5.1. Left-hand Side Marker
- 1.5.2. Right-hand Side Marker
- 1.5.3. Hardware Bag
 - 1.5.3.1. (2) M6 x 1.0 Button Head Cap Screw (BHCS), 16mm Long
 - 1.5.3.2. (4) M6 Washer, Large Diameter, Stainless
 - 1.5.3.3. (2) M6 x 1.0 Nyloc Nut, Stainless

Confidential: Property of Verus Engineering. Not for Distribution outside intended recipient list.

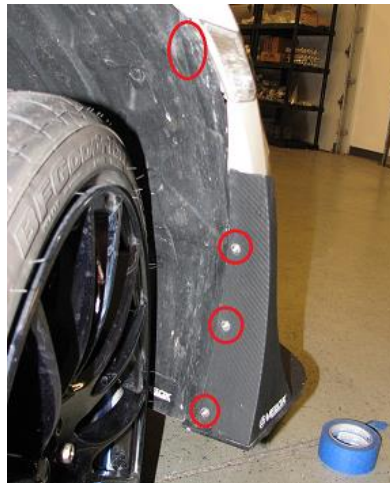
Carbon Side Marker, BRZ/FRS/GT86 – Install Manual

- 1.5.3.4. (2) M4 x 0.7 BHCS, 12mm Long
- 1.5.3.5. (10) M4 Washer, Large Diameter, Stainless
- 1.5.3.6. (2) M4 x 0.7 Nyloc Nut, Stainless
- 1.5.3.7. (2) M4 x 0.7 BHCS, 4mm Long, Stainless
- 1.5.3.8. (2) M4 x 0.7 BHCS, 6mm Long, Stainless



2. Carbon Side Marker Install

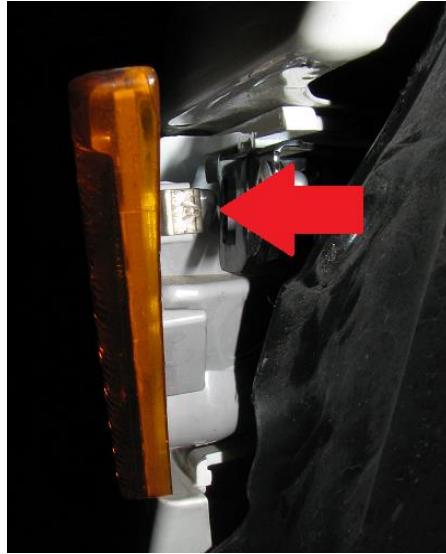
- 2.1. Verus Engineering is not responsible for damage to you or your vehicle by following this manual and/or installing Verus Engineering products.
- 2.2. We begin by gaining access to the bumper corners.
- 2.3. To remove the fender liner, we need to remove (4) plastic push pins that are circled in red below. Note that we have the endplates installed below so we removed the (3) bolts and washers.



- 2.4. The turn signal has to be removed to expose the final plastic push pin and then the front bumper can be pulled away from the vehicle. There is a metal tab that needs to be pushed towards the ***front*** of the car. The arrow in the picture shows this well. I used a flat head screwdriver to push this forward and then gently pried the signal away from the car.

Confidential: Property of Verus Engineering. Not for Distribution outside intended recipient list.

Carbon Side Marker, BRZ/FRS/GT86 – Install Manual



2.5. With the side marker removed, we can access the plastic push pin necessary for bumper removal.



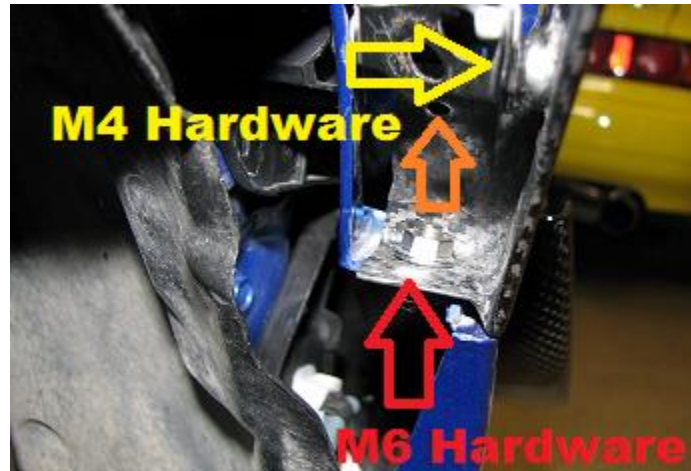
2.6. Below is a photo of the plastic rivet removed.



Confidential: Property of Verus Engineering. Not for Distribution outside intended recipient list.

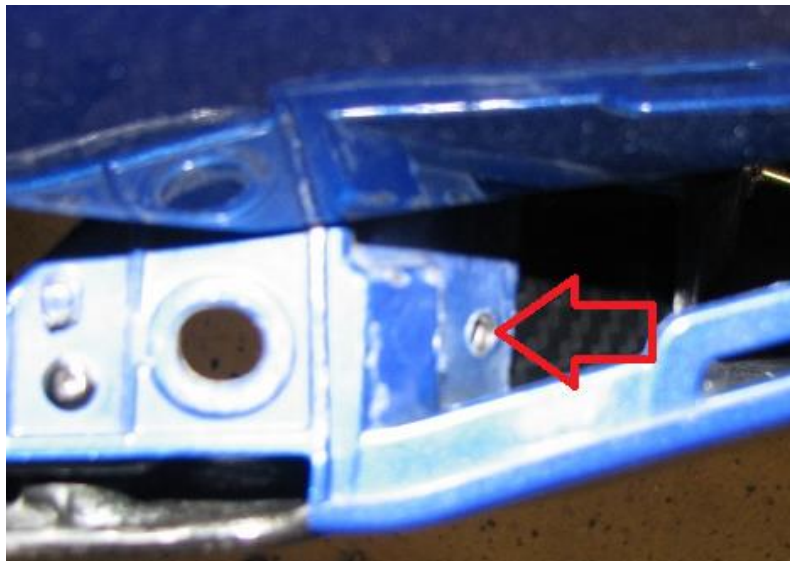
Carbon Side Marker, BRZ/FRS/GT86 – Install Manual

- 2.7. We now do a quick test fit on the install so that we can drill the front most hole in the bumper. Use the M6 bolt and nut on the bottom mounting point, and the very short M4 bolt with a washer on the upper point as shown below.



- 2.8. Mark the front most hole into the bumper with either a sharpie or a center punch (or unused tap). The hole we want to mark is the orange arrow hole in the above photo.

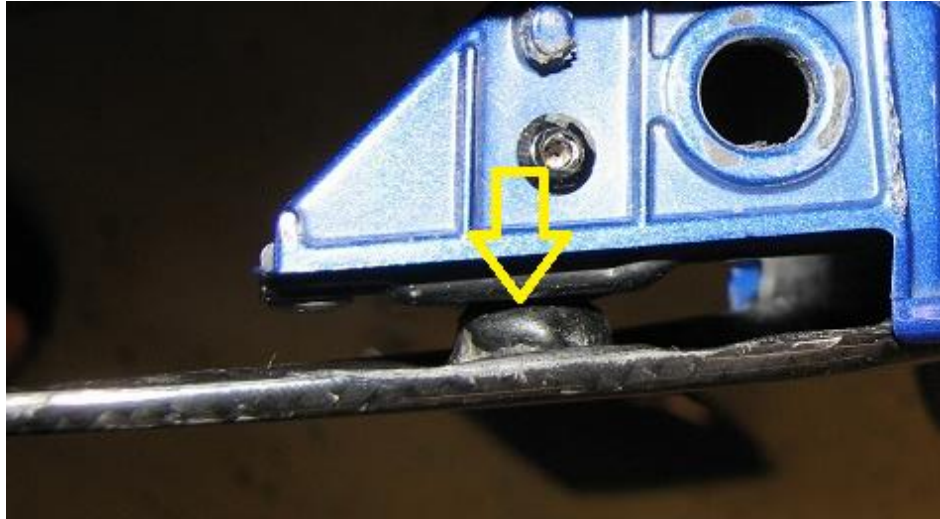
- 2.9. Utilizing the drill and 3/16" drill bit, we can drill this hole.



- 2.10. The carbon side markers are now ready to be installed. The only final part of the install that you may need to tweak, is the thickness of the bung bonded into the carbon. **Due to the manufacturing nature of carbon, this bung's thickness can vary slightly, as well as the OE bracket from car to car.** To get the best fitment, you can slight sand this bung on the carbon side marker to achieve a flush fit on the side marker.

Confidential: Property of Verus Engineering. Not for Distribution outside intended recipient list.

Carbon Side Marker, BRZ/FRS/GT86 – Install Manual



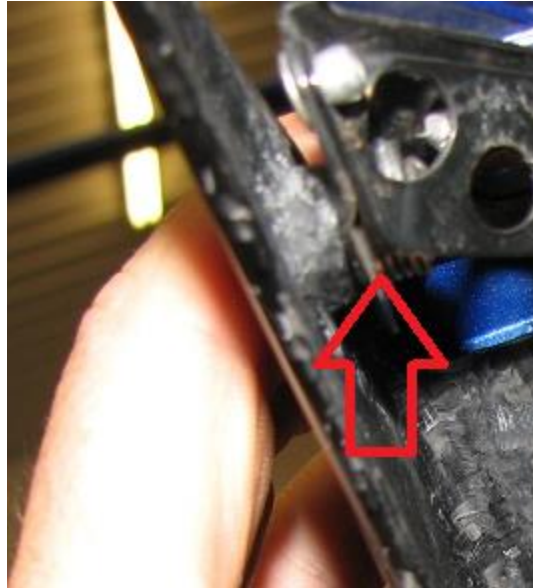
- 2.11.** When the side marker is ready to be installed, we loosely install the bottom and front fastener. Note that the front fastener needs to have the BHCS on the top side as shown below.



- 2.12.** Utilize the 6mm or 4mm long M4 BHCS and a washer, and install this on the OEM side marker metal bracket.

Confidential: Property of Verus Engineering. Not for Distribution outside intended recipient list.

Carbon Side Marker, BRZ/FRS/GT86 – Install Manual



- 2.13. With all bolts and nuts installed, we can begin tightening the fasteners. ***The nuts are nyloc, they will resist backing off. Please do not over torque these fasteners. Snug is *more* than enough.** On the carbon unit bung, ensure you do not over tighten this location. ***If you are using the 6mm fastener, and meet resistance while it is still loose, install the 4mm fastener provided.***



Confidential: Property of Verus Engineering. Not for Distribution outside intended recipient list.

Carbon Side Marker, BRZ/FRS/GT86 – Install Manual

- 2.14. If the side marker does not line up perfectly at first, you may need to do a bit of loosening, moving, and re-tightening to get the unit to fully seat and line up well.
- 2.15. We recommend removing the light bulb from the side marker socket and taping the connector to ensure heat is not being generated inside the bumper as well as corrosion stays out. Other similar options are viable as well.
- 2.16. Lastly, reinstall plastic rivet that was removed in step 2.5.
- 2.17. Congratulations, you have successfully installed the Verus Engineering carbon side markers.
- 2.18. Please contact Verus with any feedback, concerns, and questions via e-mail, sales@verus-engineering.com.



Confidential: Property of Verus Engineering. Not for Distribution outside intended recipient list.